

Product datasheet for **TA355652**

KIF16B Rabbit Polyclonal Antibody

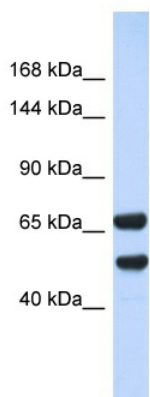
Product data:

Product Type:	Primary Antibodies
Applications:	WB
Reactivity:	Human
Host:	Rabbit
Clonality:	Polyclonal
Immunogen:	The immunogen is a synthetic peptide directed towards the N-terminal region of human KIF16B
Specificity:	Expected reactivity: Cow, Dog, Horse, Human, Mouse, Pig, Rabbit, Rat Homology: Cow: 79%; Dog: 86%; Horse: 86%; Human: 100%; Mouse: 86%; Pig: 79%; Rabbit: 86%; Rat: 86%
Formulation:	Liquid. Purified antibody supplied in 1x PBS buffer with 0.09% (w/v) sodium azide and 2% sucrose.
Concentration:	lot specific
Purification:	Affinity Purified
Conjugation:	Unconjugated
Storage:	For short term use, store at 2-8°C up to 1 week. For long term storage, store at -20°C in small aliquots to prevent freeze-thaw cycles.
Stability:	Shelf life: one year from despatch.
Predicted Protein Size:	55kDa
Gene Name:	kinesin family member 16B
Database Link:	NP_001186794.1 Entrez Gene 55614 Human Q96L93
Background:	The protein encoded by this gene is a kinesin-like protein that may be involved in intracellular trafficking. Three transcript variants encoding different isoforms have been found for this gene.
Synonyms:	C20orf23; dj971B4.1; FLJ20135; KIAA1590; KISC20ORF; SNX23
Protein Families:	Druggable Genome



[View online »](#)

Product images:



Host: Rabbit
Target Name: KIF16B
Sample Tissue: 293T Cell Lysate
Antibody Dilution: 1.0 μ g/ml

Host: Rabbit
Target Name: KIF16B
Sample Type: 293T Whole Cell lysates
Antibody Dilution: 1.0ug/ml