

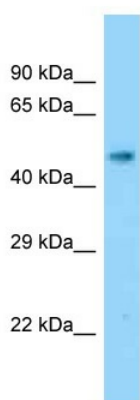
Product datasheet for TA355645

Slc17a2 Rabbit Polyclonal Antibody

Product data:

Product Type:	Primary Antibodies
Applications:	WB
Reactivity:	Mouse
Host:	Rabbit
Clonality:	Polyclonal
Specificity:	Expected reactivity: Cow, Dog, Guinea Pig, Horse, Human, Mouse, Rabbit, Rat Homology: Cow: 86%; Dog: 79%; Guinea Pig: 86%; Horse: 86%; Human: 100%; Mouse: 93%; Rabbit: 93%; Rat: 93%
Formulation:	Liquid. Purified antibody supplied in 1x PBS buffer with 0.09% (w/v) sodium azide and 2% sucrose.
Concentration:	lot specific
Purification:	Affinity Purified
Conjugation:	Unconjugated
Storage:	For short term use, store at 2-8°C up to 1 week. For long term storage, store at -20°C in small aliquots to prevent freeze-thaw cycles.
Stability:	Shelf life: one year from despatch.
Predicted Protein Size:	48kDa
Gene Name:	solute carrier family 17 (sodium phosphate), member 2
Database Link:	NP_659085 Entrez Gene 218103 Mouse A6PW34
Background:	The function of this protein remains unknown.
Synonyms:	MGC138238; NPT3

[View online »](#)

Product images:

WB Suggested Anti-Slc17a2 Antibody
Titration: 1.0 ug/ml
Positive Control: Mouse Kidney