

Product datasheet for **TA355643**

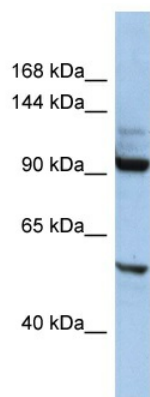
KIF19 Rabbit Polyclonal Antibody

Product data:

Product Type:	Primary Antibodies
Applications:	WB
Reactivity:	Human
Host:	Rabbit
Clonality:	Polyclonal
Immunogen:	The immunogen is a synthetic peptide directed towards the middle region of HUMAN KIF19
Specificity:	Expected reactivity: Cow, Dog, Guinea Pig, Horse, Human, Mouse, Rabbit, Rat, Zebrafish Homology: Cow: 100%; Dog: 100%; Guinea Pig: 100%; Horse: 100%; Human: 100%; Mouse: 100%; Rabbit: 93%; Rat: 100%; Zebrafish: 100%
Formulation:	Liquid. Purified antibody supplied in 1x PBS buffer with 0.09% (w/v) sodium azide and 2% sucrose.
Concentration:	lot specific
Purification:	Affinity Purified
Conjugation:	Unconjugated
Storage:	For short term use, store at 2-8°C up to 1 week. For long term storage, store at -20°C in small aliquots to prevent freeze-thaw cycles.
Stability:	Shelf life: one year from despatch.
Predicted Protein Size:	60kDa
Gene Name:	kinesin family member 19
Database Link:	Entrez Gene 124602 Human Q2TAC6-2
Background:	KIF19 is a plus end-directed microtubule-dependent motor protein that regulates the length of motile cilia by mediating depolymerization of microtubules at ciliary tips.
Synonyms:	FLJ37300; KIF19A



[View online »](#)

Product images:


Host: Rabbit
 Target Name: KIF19
 Sample Tissue: HepG2 Cell Lysate
 Antibody Dilution: 1.0µg/ml

Host: Rabbit
 Target Name: KIF19
 Sample Type: HepG2 Whole Cell lysates
 Antibody Dilution: 1.0ug/ml