

Product datasheet for **TA355641**

KIF3B Rabbit Polyclonal Antibody

Product data:

Product Type:	Primary Antibodies
Applications:	WB
Reactivity:	Mouse
Host:	Rabbit
Clonality:	Polyclonal
Immunogen:	The immunogen is a synthetic peptide directed towards the middle region of mouse KIF3B
Specificity:	Expected reactivity: Cow, Dog, Goat, Horse, Human, Mouse, Pig, Rat, Yeast, Zebrafish Homology: Cow: 100%; Dog: 100%; Goat: 79%; Horse: 100%; Human: 100%; Mouse: 93%; Pig: 100%; Rat: 100%; Yeast: 100%; Zebrafish: 83%
Formulation:	Liquid. Purified antibody supplied in 1x PBS buffer with 0.09% (w/v) sodium azide and 2% sucrose. <i>Note that this product is shipped as lyophilized powder to China customers.</i>
Concentration:	lot specific
Purification:	Affinity Purified
Conjugation:	Unconjugated
Storage:	For short term use, store at 2-8°C up to 1 week. For long term storage, store at -20°C in small aliquots to prevent freeze-thaw cycles.
Stability:	Shelf life: one year from despatch.
Predicted Protein Size:	82kDa
Gene Name:	kinesin family member 3B
Database Link:	NP_004789.1 Entrez Gene 9371 Human O15066



[View online »](#)

Background:

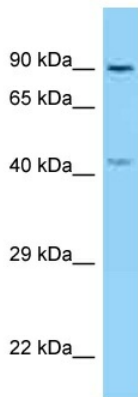
The protein encoded by this gene acts as a heterodimer with kinesin family member 3A to aid in chromosome movement during mitosis and meiosis. The encoded protein is a plus end-directed microtubule motor and can interact with the SMC3 subunit of the cohesin complex. In addition, the encoded protein may be involved in the intracellular movement of membranous organelles. This protein and kinesin family member 3A form the kinesin II subfamily of the kinesin superfamily.

Synonyms:

HH0048; KIAA0359

Protein Families:

Druggable Genome

Product images:


Host: Rabbit
 Target Name: Kif3b
 Sample Tissue: Mouse Thymus Lysate
 Antibody Dilution: 1.0µg/ml

Host: Rabbit
 Target Name: Kif3b
 Sample Type: Mouse Thymus lysates
 Antibody Dilution: 1.0ug/ml



Host: Rabbit
 Target Name: KIF3B
 Sample Type: Mouse Liver Lysate
 Antibody Dilution: 1.0µg/ml

Host: Rabbit
 Target Name: KIF3B
 Sample Tissue: Mouse Liver
 Antibody Dilution: 1ug/ml