

## Product datasheet for **TA355637**

### Pancreatic Lipase Related Protein 2 (PNLIPRP2) Rabbit Polyclonal Antibody

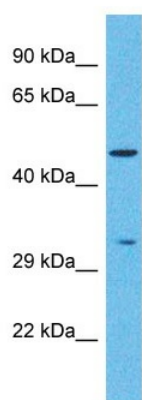
#### Product data:

Product Type:	Primary Antibodies
Applications:	WB
Reactivity:	Human
Host:	Rabbit
Clonality:	Polyclonal
Immunogen:	The immunogen is a synthetic peptide directed towards the C-terminal region of Human PNLIPRP2
Specificity:	<b>Expected reactivity:</b> Cow, Guinea Pig, Horse, Human, Mouse, Pig, Rabbit, Rat <b>Homology:</b> Cow: 86%; Guinea Pig: 79%; Horse: 86%; Human: 100%; Mouse: 79%; Pig: 86%; Rabbit: 86%; Rat: 86%
Formulation:	Liquid. Purified antibody supplied in 1x PBS buffer with 0.09% (w/v) sodium azide and 2% sucrose. <i>Note that this product is shipped as lyophilized powder to China customers.</i>
Concentration:	lot specific
Purification:	Affinity Purified
Conjugation:	Unconjugated
Storage:	For short term use, store at 2-8°C up to 1 week. For long term storage, store at -20°C in small aliquots to prevent freeze-thaw cycles.
Stability:	Shelf life: one year from despatch.
Predicted Protein Size:	51kDa
Gene Name:	pancreatic lipase related protein 2 (gene/pseudogene)
Database Link:	<a href="#">Entrez Gene 5408 Human P54317</a>
Background:	PNLIPRP2 is a lipase with broad substrate specificity. It can hydrolyze both phospholipids and galactolipids. It acts preferentially on monoglycerides, phospholipids and galactolipids. PNLIPRP2 also contributes to milk fat hydrolysis.
Synonyms:	PL-RP2; PLRP2



[View online »](#)

**Product images:**



Host: Rabbit  
Target Name: PNLIPRP2  
Sample Type: Stomach Tumor lysates  
Antibody Dilution: 1.0ug/ml