

## Product datasheet for **TA355635**

### A1BG Rabbit Polyclonal Antibody

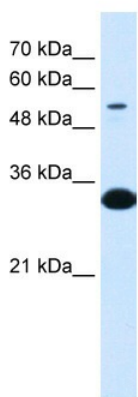
#### Product data:

Product Type:	Primary Antibodies
Applications:	WB
Reactivity:	Human
Host:	Rabbit
Clonality:	Polyclonal
Immunogen:	The immunogen is a synthetic peptide directed towards the N terminal region of human A1BG
Specificity:	<b>Expected reactivity:</b> Human <b>Homology:</b> Human: 100%
Formulation:	Liquid. Purified antibody supplied in 1x PBS buffer with 0.09% (w/v) sodium azide and 2% sucrose. <i>Note that this product is shipped as lyophilized powder to China customers.</i>
Concentration:	lot specific
Purification:	Affinity Purified
Conjugation:	Unconjugated
Storage:	For short term use, store at 2-8°C up to 1 week. For long term storage, store at -20°C in small aliquots to prevent freeze-thaw cycles.
Stability:	Shelf life: one year from despatch.
Predicted Protein Size:	54kDa
Gene Name:	alpha-1-B glycoprotein
Database Link:	<a href="#">NP_570602</a> <a href="#">Entrez Gene 1 Human P04217</a>
Background:	A1BG is a plasma glycoprotein of unknown function. It shows sequence similarity to the variable regions of some immunoglobulin supergene family member proteins.
Synonyms:	A1B; ABG; DKFZp686F0970; GAB; HYST2477
Protein Families:	Druggable Genome, ES Cell Differentiation/IPS, Secreted Protein



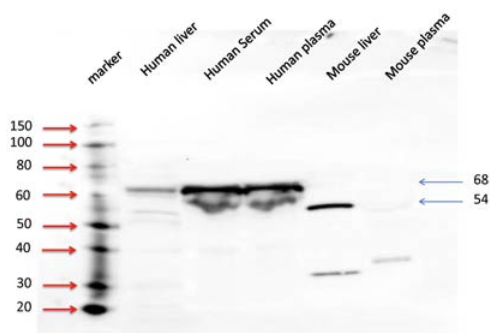
[View online »](#)

**Product images:**



WB Suggested Anti-A1BG Antibody  
 Titration: 0.1ug/ml  
 Positive Control: Fetal Liver

**A1BG**



WB Suggested Anti-A1BG Antibody  
 Titration: 5 ug/ml  
 Positive Control: human liver, human serum,  
 human plasma

See Immunoblot 2 Data and Customer Feedback tab for more information.