

Product datasheet for **TA355634**

PARP12 Rabbit Polyclonal Antibody

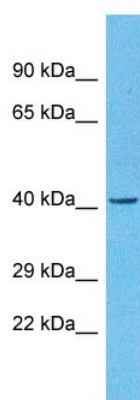
Product data:

Product Type:	Primary Antibodies
Applications:	WB
Reactivity:	Human
Host:	Rabbit
Clonality:	Polyclonal
Immunogen:	The immunogen is a synthetic peptide directed towards the C-terminal region of human PARP12
Specificity:	Expected reactivity: Dog, Horse, Human, Rat Homology: Dog: 100%; Horse: 91%; Human: 100%; Rat: 100%
Formulation:	Liquid. Purified antibody supplied in 1x PBS buffer with 0.09% (w/v) sodium azide and 2% sucrose. <i>Note that this product is shipped as lyophilized powder to China customers.</i>
Concentration:	lot specific
Purification:	Affinity Purified
Conjugation:	Unconjugated
Storage:	For short term use, store at 2-8°C up to 1 week. For long term storage, store at -20°C in small aliquots to prevent freeze-thaw cycles.
Stability:	Shelf life: one year from despatch.
Predicted Protein Size:	46kDa
Gene Name:	poly(ADP-ribose) polymerase family member 12
Database Link:	XP_005250096.1 Entrez Gene 64761 Human G5E9U9
Synonyms:	FLJ22693; MST109; MSTP109; PARP-12; ZC3H1; ZC3HDC1



[View online »](#)

Product images:



Host: Rabbit
Target Name: PARP12
Sample Type: Ovary Tumor lysates
Antibody Dilution: 1.0ug/ml