

Product datasheet for **TA355631**

ZNF592 Rabbit Polyclonal Antibody

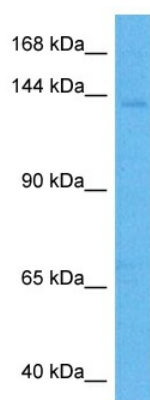
Product data:

Product Type:	Primary Antibodies
Applications:	WB
Reactivity:	Human
Host:	Rabbit
Clonality:	Polyclonal
Immunogen:	The immunogen is a synthetic peptide directed towards the N terminal region of human ZNF592
Specificity:	Expected reactivity: Human Homology: Cow: 92%; Dog: 92%; Guinea Pig: 92%; Horse: 92%; Human: 100%; Mouse: 85%; Rabbit: 92%; Rat: 92%
Formulation:	Liquid. Purified antibody supplied in 1x PBS buffer with 0.09% (w/v) sodium azide and 2% sucrose.
Concentration:	lot specific
Purification:	Affinity purified
Conjugation:	Unconjugated
Storage:	For short term use, store at 2-8°C up to 1 week. For long term storage, store at -20°C in small aliquots to prevent freeze-thaw cycles.
Stability:	Shelf life: one year from despatch.
Predicted Protein Size:	139 kDa
Gene Name:	zinc finger protein 592
Database Link:	NP_055445 Entrez Gene 9640 Human Q92610
Background:	This gene is thought to play a role in a complex developmental pathway and the regulation of genes involved in cerebellar development. Mutations in this gene have been associated with autosomal recessive spinocerebellar ataxia.
Synonyms:	KIAA0211; MGC138437; MGC138439
Protein Families:	Transcription Factors



[View online »](#)

Product images:



Host: Rabbit
Target Name: ZNF592
Sample Type: 293T Cell Lysate
Antibody Dilution: 1.0µg/ml

Host: Rabbit
Target Name: ZNF592
Sample Tissue: Human 293T Whole Cell lysates
Antibody Dilution: 2ug/ml