

Product datasheet for **TA355629**

TOX1 (TOX) Rabbit Polyclonal Antibody

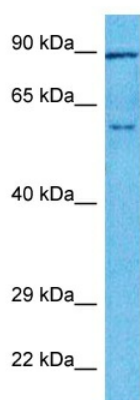
Product data:

Product Type:	Primary Antibodies
Applications:	WB
Reactivity:	Human
Host:	Rabbit
Clonality:	Polyclonal
Immunogen:	The immunogen is a synthetic peptide directed towards the middle region of Human TOX
Specificity:	Expected reactivity: Cow, Dog, Guinea Pig, Horse, Human, Mouse, Rabbit, Rat Homology: Cow: 93%; Dog: 93%; Guinea Pig: 100%; Horse: 100%; Human: 100%; Mouse: 79%; Rabbit: 86%; Rat: 100%
Formulation:	Liquid. Purified antibody supplied in 1x PBS buffer with 0.09% (w/v) sodium azide and 2% sucrose. <i>Note that this product is shipped as lyophilized powder to China customers.</i>
Concentration:	lot specific
Purification:	Affinity purified
Conjugation:	Unconjugated
Storage:	For short term use, store at 2-8°C up to 1 week. For long term storage, store at -20°C in small aliquots to prevent freeze-thaw cycles.
Stability:	Shelf life: one year from despatch.
Predicted Protein Size:	57kDa
Gene Name:	thymocyte selection associated high mobility group box
Database Link:	NP_055544 Entrez Gene 9760 Human O94900
Background:	The protein encoded by this gene contains a HMG box DNA binding domain. HMG boxes are found in many eukaryotic proteins involved in chromatin assembly, transcription and replication. This protein may function to regulate T-cell development.
Synonyms:	KIAA0808; TOX1



[View online »](#)

Product images:



Host: Rabbit
Target Name: TOX
Sample Tissue: Ovary Tumor Lysate
Antibody Dilution: 1.0µg/ml

Host: Rabbit
Target Name: TOX
Sample Type: Ovary Tumor lysates
Antibody Dilution: 1.0ug/ml