

Product datasheet for **TA355624**

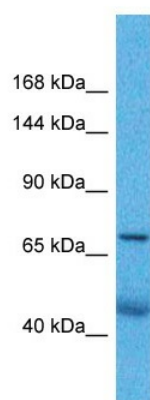
ZNF606 Rabbit Polyclonal Antibody

Product data:

Product Type:	Primary Antibodies
Applications:	WB
Reactivity:	Human
Host:	Rabbit
Clonality:	Polyclonal
Immunogen:	The immunogen is a synthetic peptide directed towards the middle region of human ZNF606
Specificity:	Expected reactivity: Cow, Dog, Guinea Pig, Horse, Human, Mouse, Rabbit, Rat Homology: Cow: 86%; Dog: 93%; Guinea Pig: 100%; Horse: 100%; Human: 100%; Mouse: 93%; Rabbit: 86%; Rat: 93%
Formulation:	Liquid. Purified antibody supplied in 1x PBS buffer with 0.09% (w/v) sodium azide and 2% sucrose.
Concentration:	lot specific
Purification:	Affinity Purified
Conjugation:	Unconjugated
Storage:	For short term use, store at 2-8°C up to 1 week. For long term storage, store at -20°C in small aliquots to prevent freeze-thaw cycles.
Stability:	Shelf life: one year from despatch.
Predicted Protein Size:	77kDa
Gene Name:	zinc finger protein 606
Database Link:	NP_079303.2 Entrez Gene 80095 Human Q8WXB4
Synonyms:	FLJ14260; KIAA1852; ZNF328
Protein Families:	Druggable Genome, Transcription Factors



[View online »](#)

Product images:


Host: Rabbit
 Target Name: ZNF606
 Sample Type: Lung Tumor lysates
 Antibody Dilution: 1.0ug/ml