

## Product datasheet for TA355622

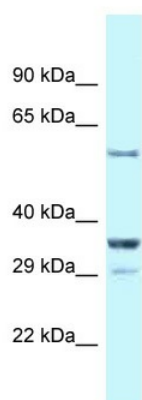
### Cbl11 Rabbit Polyclonal Antibody

#### Product data:

Product Type:	Primary Antibodies
Applications:	WB
Reactivity:	Mouse
Host:	Rabbit
Clonality:	Polyclonal
Specificity:	<b>Expected reactivity:</b> Cow, Dog, Horse, Human, Mouse, Pig, Rat <b>Homology:</b> Cow: 100%; Dog: 100%; Horse: 100%; Human: 100%; Mouse: 100%; Pig: 100%; Rat: 100%
Formulation:	Liquid. Purified antibody supplied in 1x PBS buffer with 0.09% (w/v) sodium azide and 2% sucrose. <i>Note that this product is shipped as lyophilized powder to China customers.</i>
Concentration:	lot specific
Purification:	Affinity Purified
Conjugation:	Unconjugated
Storage:	For short term use, store at 2-8°C up to 1 week. For long term storage, store at -20°C in small aliquots to prevent freeze-thaw cycles.
Stability:	Shelf life: one year from despatch.
Predicted Protein Size:	54kDa
Gene Name:	Casitas B-lineage lymphoma-like 1
Database Link:	<a href="#">NP_598809</a> <a href="#">Entrez Gene 104836 Mouse</a> <a href="#">Q9JIY2</a>
Background:	Cbl11 promotes ubiquitination of tyrosine-phosphorylated CDH1, thus targeting CDH1 for endocytosis and degradation.
Synonyms:	FLJ23109; HAKAI; MGC163401; MGC163403; RNF188



[View online »](#)

**Product images:**

WB Suggested Anti-Cbl11 Antibody  
Titration: 1.0 ug/ml  
Positive Control: Mouse Kidney