

## Product datasheet for **TA355613**

### ZBTB25 Rabbit Polyclonal Antibody

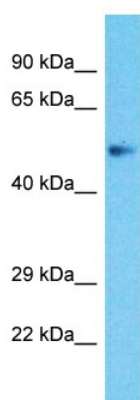
#### Product data:

Product Type:	Primary Antibodies
Applications:	WB
Reactivity:	Human
Host:	Rabbit
Clonality:	Polyclonal
Immunogen:	The immunogen is a synthetic peptide directed towards the middle region of Human ZBTB25
Specificity:	<b>Expected reactivity:</b> Cow, Dog, Horse, Human, Mouse, Pig, Rat <b>Homology:</b> Cow: 93%; Dog: 100%; Horse: 100%; Human: 100%; Mouse: 86%; Pig: 100%; Rat: 86%
Formulation:	Liquid. Purified antibody supplied in 1x PBS buffer with 0.09% (w/v) sodium azide and 2% sucrose. <i>Note that this product is shipped as lyophilized powder to China customers.</i>
Concentration:	lot specific
Purification:	Affinity Purified
Conjugation:	Unconjugated
Storage:	For short term use, store at 2-8°C up to 1 week. For long term storage, store at -20°C in small aliquots to prevent freeze-thaw cycles.
Stability:	Shelf life: one year from despatch.
Predicted Protein Size:	47kDa
Gene Name:	zinc finger and BTB domain containing 25
Database Link:	<a href="#">XP_005268110</a> <a href="#">Entrez Gene 7597 Human</a> <a href="#">P24278</a>
Background:	ZBTB25 may be involved in transcriptional regulation.
Synonyms:	KUP; OTTHUMP00000180663; ZNF46



[View online »](#)

## Product images:



Host: Rabbit  
Target Name: ZBTB25  
Sample Tissue: Uterus Tumor Lysate  
Antibody Dilution: 1.0 $\mu$ g/ml

Host: Rabbit  
Target Name: ZBTB25  
Sample Type: Uterus Tumor lysates  
Antibody Dilution: 1.0ug/ml