

Product datasheet for **TA355609**

ZFY Rabbit Polyclonal Antibody

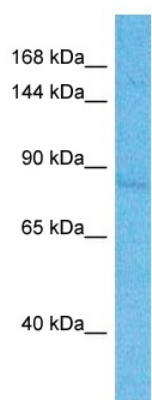
Product data:

Product Type:	Primary Antibodies
Applications:	WB
Reactivity:	Human
Host:	Rabbit
Clonality:	Polyclonal
Immunogen:	The immunogen is a synthetic peptide directed towards the C-terminal region of Human ZFY
Specificity:	Expected reactivity: Cow, Dog, Guinea Pig, Horse, Human, Mouse, Rabbit, Rat, Zebrafish Homology: Cow: 100%; Dog: 100%; Guinea Pig: 100%; Horse: 100%; Human: 100%; Mouse: 100%; Rabbit: 100%; Rat: 100%; Zebrafish: 100%
Formulation:	Liquid. Purified antibody supplied in 1x PBS buffer with 0.09% (w/v) sodium azide and 2% sucrose.
Concentration:	lot specific
Purification:	Affinity purified
Conjugation:	Unconjugated
Storage:	For short term use, store at 2-8°C up to 1 week. For long term storage, store at -20°C in small aliquots to prevent freeze-thaw cycles.
Stability:	Shelf life: one year from despatch.
Predicted Protein Size:	88kDa
Gene Name:	zinc finger protein, Y-linked
Database Link:	XP_006724936 Entrez Gene 7544 Human P08048
Background:	This gene encodes a zinc finger-containing protein that may function as a transcription factor. This gene was once a candidate gene for the testis-determining factor (TDF) and was erroneously referred to as TDF.
Synonyms:	MGC138710; OTTHUMP00000034366



[View online »](#)

Product images:



Host: Rabbit
Target Name: ZFY
Sample Tissue: ACHN Cell Lysate
Antibody Dilution: 1.0 μ g/ml

Host: Rabbit
Target Name: ZFY
Sample Type: ACHN Whole Cell lysates
Antibody Dilution: 1.0ug/ml