

## Product datasheet for **TA355608**

### Kdm6a Rabbit Polyclonal Antibody

#### Product data:

Product Type:	Primary Antibodies
Applications:	WB
Reactivity:	Mouse
Host:	Rabbit
Clonality:	Polyclonal
Specificity:	This antibody is 100% homologous to isoforms 1 and 2.

**Expected reactivity:** Cow, Dog, Guinea Pig, Horse, Human, Rabbit, Rat

**Homology:** Cow: 100%; Dog: 100%; Guinea Pig: 100%; Horse: 100%; Human: 100%; Rabbit: 100%; Rat: 100%

**Formulation:** Liquid. Purified antibody supplied in 1x PBS buffer with 0.09% (w/v) sodium azide and 2% sucrose.

*Note that this product is shipped as lyophilized powder to China customers.*

**Concentration:** lot specific

**Purification:** Affinity Purified

**Conjugation:** Unconjugated

**Storage:** For short term use, store at 2-8°C up to 1 week. For long term storage, store at -20°C in small aliquots to prevent freeze-thaw cycles.

**Stability:** Shelf life: one year from despatch.

**Predicted Protein Size:** 154kDa

**Gene Name:** lysine (K)-specific demethylase 6A

**Database Link:** [NP\\_033509](#)  
[Entrez Gene 22289 Mouse](#)  
[O70546](#)

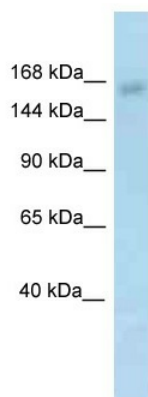
**Background:** The function of this protein remains unknown.

**Synonyms:** bA386N14.2; DKFZp686A03225; MGC141941; UTX



[View online »](#)

Product images:



WB Suggested Anti-Utx Antibody  
Titration: 1.0 ug/ml  
Positive Control: Mouse Intestine