

Product datasheet for **TA355606**

Tead4 Rabbit Polyclonal Antibody

Product data:

| | |
|-------------------------|--|
| Product Type: | Primary Antibodies |
| Applications: | WB |
| Reactivity: | Human, Mouse |
| Host: | Rabbit |
| Clonality: | Polyclonal |
| Specificity: | Expected reactivity: Cow, Dog, Guinea Pig, Horse, Human, Mouse, Rabbit, Rat, Zebrafish Homology: Cow: 100%; Dog: 100%; Guinea Pig: 100%; Horse: 100%; Human: 100%; Mouse: 93%; Rabbit: 100%; Rat: 93%; Zebrafish: 86% |
| Formulation: | Liquid. Purified antibody supplied in 1x PBS buffer with 0.09% (w/v) sodium azide and 2% sucrose. <i>Note that this product is shipped as lyophilized powder to China customers.</i> |
| Concentration: | lot specific |
| Purification: | Affinity Purified |
| Conjugation: | Unconjugated |
| Storage: | For short term use, store at 2-8°C up to 1 week. For long term storage, store at -20°C in small aliquots to prevent freeze-thaw cycles. |
| Stability: | Shelf life: one year from despatch. |
| Predicted Protein Size: | 48kDa |
| Gene Name: | TEA domain family member 4 |
| Database Link: | NP_035697 Entrez Gene 7004 Human Entrez Gene 21679 Mouse Q62296 |
| Background: | This gene product is a member of the transcriptional enhancer factor (TEF) family of transcription factors, which contain the TEA/ATTS DNA-binding domain. It is preferentially expressed in the skeletal muscle, and binds to the M-CAT regulatory element found in promoters of muscle-specific genes to direct their gene expression. This factor may play a role in the embryonic development of skeletal muscle. Alternatively spliced transcripts encoding distinct isoforms, which are translated through the use of a non-AUG (AUU) initiation codon, have been described for this gene. |



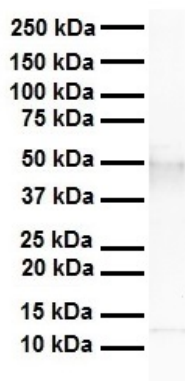
[View online »](#)

Synonyms: EFTR-2; hrTEF-1B; RTEF1; TCF13L1; TEF-3; TEF3; TEFR-1

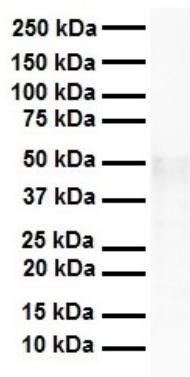
Product images:



WB Suggested Anti-Tead4 Antibody
Titration: 1.0 ug/ml
Positive Control: Mouse Intestine



WB Suggested Anti-Tead4 antibody Titration: 1
ug/mL
Sample Type: Human heart



WB Suggested Anti-Tead4 antibody Titration: 1 ug/mL
Sample Type: Human liver