

Product datasheet for **TA355605**

BRD3 Rabbit Polyclonal Antibody

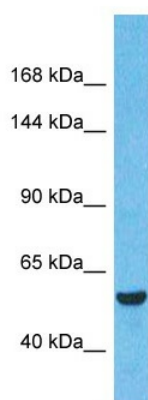
Product data:

Product Type:	Primary Antibodies
Applications:	WB
Reactivity:	Human
Host:	Rabbit
Clonality:	Polyclonal
Immunogen:	The immunogen is a synthetic peptide directed towards the middle region of Human BRD3
Specificity:	Expected reactivity: Cow, Dog, Guinea Pig, Horse, Human, Mouse, Pig, Rabbit, Rat, Zebrafish Homology: Cow: 92%; Dog: 85%; Guinea Pig: 92%; Horse: 92%; Human: 100%; Mouse: 84%; Pig: 78%; Rabbit: 92%; Rat: 92%; Zebrafish: 78%
Formulation:	Liquid. Purified antibody supplied in 1x PBS buffer with 0.09% (w/v) sodium azide and 2% sucrose. <i>Note that this product is shipped as lyophilized powder to China customers.</i>
Concentration:	lot specific
Purification:	Affinity Purified
Conjugation:	Unconjugated
Storage:	For short term use, store at 2-8°C up to 1 week. For long term storage, store at -20°C in small aliquots to prevent freeze-thaw cycles.
Stability:	Shelf life: one year from despatch.
Predicted Protein Size:	61kDa
Gene Name:	bromodomain containing 3
Database Link:	Entrez Gene 8019 Human Q15059-2
Background:	This gene was identified based on its homology to the gene encoding the RING3 protein, a serine/threonine kinase. The gene localizes to 9q34, a region which contains several major histocompatibility complex (MHC) genes. The function of the encoded protein is not known.
Synonyms:	FLJ23227; FLJ41328; KIAA0043; ORFX; RING3-like; RING3L



[View online »](#)

Product images:



Host: Rabbit
Target Name: BRD3
Sample Type: Liver tumor lysates
Antibody Dilution: 1.0ug/ml