

Product datasheet for **TA355592**

Ccn11 Rabbit Polyclonal Antibody

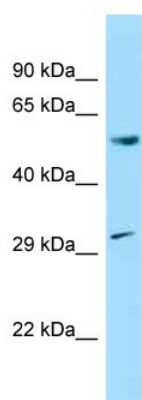
Product data:

Product Type:	Primary Antibodies
Applications:	WB
Reactivity:	Rat
Host:	Rabbit
Clonality:	Polyclonal
Specificity:	Expected reactivity: Cow, Dog, Guinea Pig, Human, Mouse, Rabbit, Rat, Zebrafish Homology: Cow: 100%; Dog: 100%; Guinea Pig: 100%; Human: 100%; Mouse: 100%; Rabbit: 100%; Rat: 100%; Zebrafish: 100%
Formulation:	Liquid. Purified antibody supplied in 1x PBS buffer with 0.09% (w/v) sodium azide and 2% sucrose. <i>Note that this product is shipped as lyophilized powder to China customers.</i>
Concentration:	lot specific
Purification:	Affinity Purified
Conjugation:	Unconjugated
Storage:	For short term use, store at 2-8°C up to 1 week. For long term storage, store at -20°C in small aliquots to prevent freeze-thaw cycles.
Stability:	Shelf life: one year from despatch.
Predicted Protein Size:	57kDa
Gene Name:	cyclin L1
Database Link:	NP_446114 Entrez Gene 114121 Rat Q9R1Q2
Background:	Ccn11 is a cyclin protein that is regulated by cAMP response element binding protein (CREB); it may be involved with differential RNA processing, such as alternative splicing.
Synonyms:	ania-6a; BM-001; Cyclin-L; PRO1073



[View online »](#)

Product images:



WB Suggested Anti-Ccn1 Antibody
Titration: 1.0 ug/ml
Positive Control: Rat Brain