

Product datasheet for **TA355591**

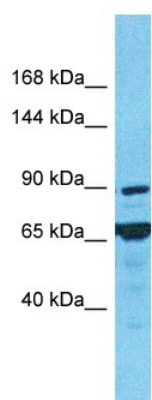
BBX Rabbit Polyclonal Antibody

Product data:

Product Type:	Primary Antibodies
Applications:	WB
Reactivity:	Human
Host:	Rabbit
Clonality:	Polyclonal
Immunogen:	The immunogen is a synthetic peptide directed towards the N-terminal region of Human BBX
Specificity:	Expected reactivity: Cow, Dog, Guinea Pig, Horse, Human, Mouse, Pig, Rabbit, Rat Homology: Cow: 100%; Dog: 93%; Guinea Pig: 86%; Horse: 100%; Human: 100%; Mouse: 93%; Pig: 93%; Rabbit: 100%; Rat: 100%
Formulation:	Liquid. Purified antibody supplied in 1x PBS buffer with 0.09% (w/v) sodium azide and 2% sucrose.
Concentration:	lot specific
Purification:	Affinity purified
Conjugation:	Unconjugated
Storage:	For short term use, store at 2-8°C up to 1 week. For long term storage, store at -20°C in small aliquots to prevent freeze-thaw cycles.
Stability:	Shelf life: one year from despatch.
Predicted Protein Size:	103kDa
Gene Name:	bobby sox homolog (Drosophila)
Database Link:	Entrez Gene 56987 Human Q8WY36
Background:	BBX is a transcription factor that is necessary for cell cycle progression from G1 to S phase.
Synonyms:	HBP2; HSPC339; MDS001; OTTHUMP00000197192



[View online »](#)

Product images:

Host: Rabbit
Target Name: BBX
Sample Tissue: Fetal Liver Lysate
Antibody Dilution: 1.0 μ g/ml

Host: Rabbit
Target Name: BBX
Sample Type: Fetal Liver lysates
Antibody Dilution: 1.0 μ g/ml