

Product datasheet for **TA355588**

ZNF312 (FEZF2) Rabbit Polyclonal Antibody

Product data:

Product Type:	Primary Antibodies
Applications:	WB
Reactivity:	Human
Host:	Rabbit
Clonality:	Polyclonal
Immunogen:	The immunogen is a synthetic peptide directed towards the C-terminal region of Human FEZF2
Specificity:	Expected reactivity: Cow, Dog, Guinea Pig, Horse, Human, Mouse, Rabbit, Rat Homology: Cow: 93%; Dog: 93%; Guinea Pig: 93%; Horse: 92%; Human: 100%; Mouse: 86%; Rabbit: 100%; Rat: 85%
Formulation:	Liquid. Purified antibody supplied in 1x PBS buffer with 0.09% (w/v) sodium azide and 2% sucrose. <i>Note that this product is shipped as lyophilized powder to China customers.</i>
Concentration:	lot specific
Purification:	Affinity purified
Conjugation:	Unconjugated
Storage:	For short term use, store at 2-8°C up to 1 week. For long term storage, store at -20°C in small aliquots to prevent freeze-thaw cycles.
Stability:	Shelf life: one year from despatch.
Predicted Protein Size:	50kDa
Gene Name:	FEZ family zinc finger 2
Database Link:	NP_060478 Entrez Gene 55079 Human Q8TBJ5



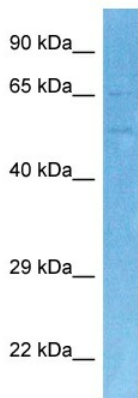
[View online »](#)

Background:

FEZF2 is a transcription repressor. It is required for the specification of corticospinal motor neurons and other subcerebral projection neurons. It may play a role in layer and neuronal subtype-specific patterning of subcortical projections and axonal fasciculation. And it controls the development of dendritic arborization and spines of large layer V pyramidal neurons. It may be involved in innate immunity.

Synonyms:

FEZ; FEZL; FKSG36; FLJ10142; TOF; Zfp312; ZNF312

Product images:

Host: Rabbit
Target Name: FEZF2
Sample Tissue: PANC1 Cell Lysate
Antibody Dilution: 1.0µg/ml

Host: Rabbit
Target Name: FEZF2
Sample Type: PANC1 Whole Cell lysates
Antibody Dilution: 1.0ug/ml