

Product datasheet for **TA355586**

SRRM2 Rabbit Polyclonal Antibody

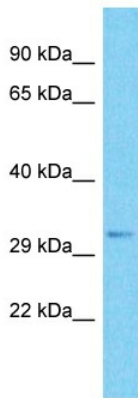
Product data:

Product Type:	Primary Antibodies
Applications:	WB
Reactivity:	Human
Host:	Rabbit
Clonality:	Polyclonal
Immunogen:	The immunogen is a synthetic peptide directed towards the C-terminal region of Human SRRM2
Specificity:	Expected reactivity: Cow, Dog, Guinea Pig, Horse, Human, Mouse, Pig, Rabbit, Rat Homology: Cow: 86%; Dog: 90%; Guinea Pig: 79%; Horse: 86%; Human: 100%; Mouse: 93%; Pig: 86%; Rabbit: 93%; Rat: 93%
Formulation:	Liquid. Purified antibody supplied in 1x PBS buffer with 0.09% (w/v) sodium azide and 2% sucrose.
Concentration:	lot specific
Purification:	Affinity Purified
Conjugation:	Unconjugated
Storage:	For short term use, store at 2-8°C up to 1 week. For long term storage, store at -20°C in small aliquots to prevent freeze-thaw cycles.
Stability:	Shelf life: one year from despatch.
Predicted Protein Size:	34kDa
Gene Name:	serine/arginine repetitive matrix 2
Database Link:	Entrez Gene 23524 Human Q9UQ35-3
Background:	SRRM2 is involved in pre-mRNA splicing. It may function at or prior to the first catalytic step of splicing at the catalytic center of the spliceosome and may do so by stabilizing the catalytic center or the position of the RNA substrate. It binds to RNA.
Synonyms:	300-KD; CWF21; DKFZp686O15166; FLJ21926; FLJ22250; KIAA0324; MGC40295; SRL300; SRm300



[View online »](#)

Product images:



Host: Rabbit
Target Name: SRRM2
Sample Tissue: HepG2 Cell Lysate
Antibody Dilution: 1.0 μ g/ml

Host: Rabbit
Target Name: SRRM2
Sample Type: HepG2 Whole Cell lysates
Antibody Dilution: 1.0ug/ml



Host: Rabbit
Target Name: SRRM2
Sample Type: Jurkat Cell Lysate
Antibody Dilution: 1.0 μ g/ml

Host: Rabbit
Target Name: SRRM2
Sample Tissue: Human Jurkat Whole Cell
Antibody Dilution: 1ug/ml