

Product datasheet for **TA355578**

TBC1D2B Rabbit Polyclonal Antibody

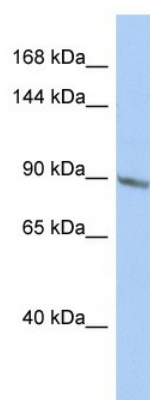
Product data:

Product Type:	Primary Antibodies
Applications:	WB
Reactivity:	Human
Host:	Rabbit
Clonality:	Polyclonal
Immunogen:	The immunogen is a synthetic peptide directed towards the middle region of human TBC1D2B
Specificity:	Expected reactivity: Cow, Dog, Guinea Pig, Horse, Human, Mouse, Rabbit, Rat Homology: Cow: 79%; Dog: 79%; Guinea Pig: 86%; Horse: 79%; Human: 100%; Mouse: 79%; Rabbit: 86%; Rat: 93%
Formulation:	Liquid. Purified antibody supplied in 1x PBS buffer with 0.09% (w/v) sodium azide and 2% sucrose. <i>Note that this product is shipped as lyophilized powder to China customers.</i>
Concentration:	lot specific
Purification:	Affinity Purified
Conjugation:	Unconjugated
Storage:	For short term use, store at 2-8°C up to 1 week. For long term storage, store at -20°C in small aliquots to prevent freeze-thaw cycles.
Stability:	Shelf life: one year from despatch.
Predicted Protein Size:	92kDa
Gene Name:	TBC1 domain family member 2B
Database Link:	NP_055894.6 Entrez Gene 23102 Human Q9UPU7
Synonyms:	FLJ20166; KIAA1055
Protein Families:	Transcription Factors



[View online »](#)

Product images:



Host: Rabbit
Target Name: TBC1D2B
Sample Type: HepG2 Whole cell lysates
Antibody Dilution: 1.0ug/ml