

## Product datasheet for **TA355573**

### **Snf8 Rabbit Polyclonal Antibody**

#### **Product data:**

Product Type:	Primary Antibodies
Applications:	IHC, WB
Reactivity:	Rat
Host:	Rabbit
Clonality:	Polyclonal
Specificity:	<b>Expected reactivity:</b> Cow, Dog, Goat, Guinea Pig, Horse, Human, Mouse, Rabbit, Rat, Zebrafish <b>Homology:</b> Cow: 100%; Dog: 100%; Goat: 79%; Guinea Pig: 100%; Horse: 100%; Human: 100%; Mouse: 100%; Rabbit: 100%; Rat: 100%; Zebrafish: 100%
Formulation:	Liquid. Purified antibody supplied in 1x PBS buffer with 0.09% (w/v) sodium azide and 2% sucrose.
Concentration:	lot specific
Purification:	Affinity Purified
Conjugation:	Unconjugated
Storage:	For short term use, store at 2-8°C up to 1 week. For long term storage, store at -20°C in small aliquots to prevent freeze-thaw cycles.
Stability:	Shelf life: one year from despatch.
Predicted Protein Size:	28kDa
Gene Name:	SNF8, ESCRT-II complex subunit
Database Link:	<a href="#">NP_001007805</a> <a href="#">Entrez Gene 287645 Rat</a> <a href="#">Q5RK19</a>



[View online »](#)

**Background:**

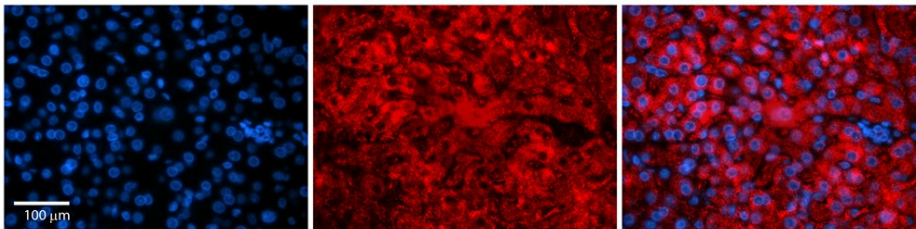
Snf8 is required for degradation of both endocytosed EGF and EGFR, but not for the EGFR ligand-mediated internalization. It is a component of the endosomal sorting complex required for transport II (ESCRT-II), which is required for multivesicular body (MVB) formation and sorting of endosomal cargo proteins into MVBs. The MVB pathway mediates delivery of transmembrane proteins into the lumen of the lysosome for degradation. The ESCRT-II complex is probably involved in the recruitment of the ESCRT-III complex. The ESCRT-II complex may also play a role in transcription regulation by participating in derepression of transcription by RNA polymerase II, possibly via its interaction with ELL.

**Synonyms:**

Dot3; EAP30; hVps22; VPS22

**Product images:**


WB Suggested Anti-Snf8 Antibody  
Titration: 1.0 ug/ml  
Positive Control: Rat Liver



Rabbit Anti-Snf8 Antibody  
Catalog Number: TA355573  
Formalin Fixed Paraffin Embedded Tissue:  
Human Adult liver  
Observed Staining: Cytoplasmic  
Primary Antibody Concentration: 1:100  
Secondary Antibody: Donkey anti-Rabbit-Cy2/3  
Secondary Antibody Concentration: 1:200  
Magnification: 20X  
Exposure Time: 0.5-2.0 sec  
Protocol located in Reviews and Data.