

Product datasheet for **TA355566**

NOTCH4 Rabbit Polyclonal Antibody

Product data:

Product Type:	Primary Antibodies
Applications:	IHC, WB
Reactivity:	Human
Host:	Rabbit
Clonality:	Polyclonal
Immunogen:	The immunogen is a synthetic peptide directed towards the middle region of human NOTCH4
Specificity:	Expected reactivity: Cow, Guinea Pig, Horse, Human, Pig, Rat Homology: Cow: 100%; Guinea Pig: 86%; Horse: 100%; Human: 100%; Pig: 100%; Rat: 93%
Formulation:	Liquid. Purified antibody supplied in 1x PBS buffer with 0.09% (w/v) sodium azide and 2% sucrose. <i>Note that this product is shipped as lyophilized powder to China customers.</i>
Concentration:	lot specific
Purification:	Affinity Purified
Conjugation:	Unconjugated
Storage:	For short term use, store at 2-8°C up to 1 week. For long term storage, store at -20°C in small aliquots to prevent freeze-thaw cycles.
Stability:	Shelf life: one year from despatch.
Predicted Protein Size:	61kDa
Gene Name:	notch 4
Database Link:	Entrez Gene 4855 Human Q99466-2



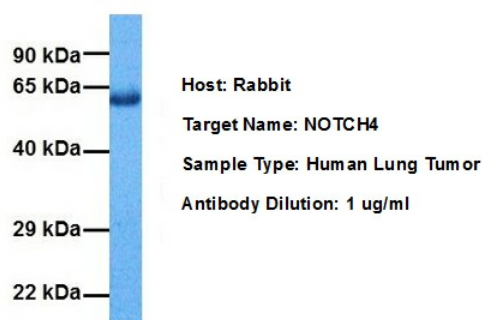
[View online »](#)

Background:

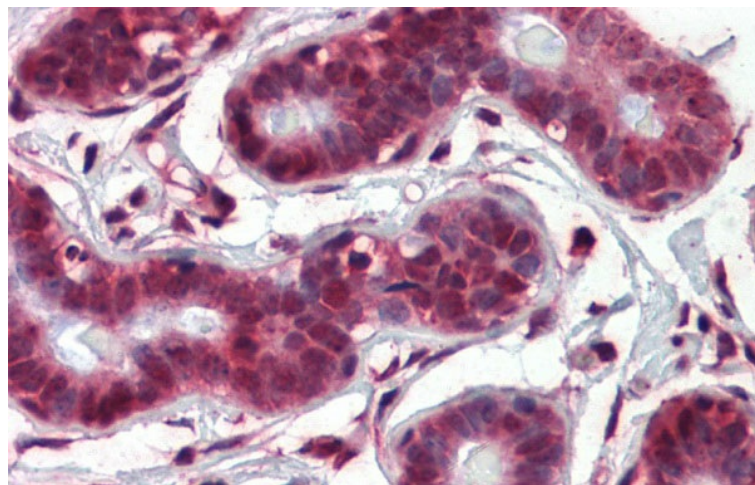
NOTCH4 is a member of the Notch family. Members of this Type 1 transmembrane protein family share structural characteristics including an extracellular domain consisting of multiple epidermal growth factor-like (EGF) repeats, and an intracellular domain consisting of multiple, different domain types. Notch family members play a role in a variety of developmental processes by controlling cell fate decisions. The Notch signaling network is an evolutionarily conserved intercellular signaling pathway which regulates interactions between physically adjacent cells. NOTCH4 is cleaved in the trans-Golgi network, and presented on the cell surface as a heterodimer. NOTCH4 functions as a receptor for membrane bound ligands, and may play a role in vascular, renal and hepatic development. NOTCH4 gene may be associated with susceptibility to schizophrenia in a small portion of cases.

Synonyms:

FLJ16302; hNotch4; INT3; MGC74442; NOTCH3

Product images:**NOTCH4**

Host: Rabbit
Target Name: NOTCH4
Sample Tissue: Human Lung Tumor
Antibody Dilution: 1.0ug/ml



Immunohistochemistry with Human Breast tissue at an antibody concentration of 5.0ug/ml using anti-NOTCH4 antibody (TA355566)