

Product datasheet for **TA355564**

v Myb (MYBL1) Rabbit Polyclonal Antibody

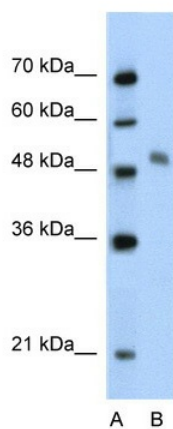
Product data:

Product Type:	Primary Antibodies
Applications:	IHC, WB
Reactivity:	Human
Host:	Rabbit
Clonality:	Polyclonal
Immunogen:	The immunogen is a synthetic peptide directed towards the middle region of human MYBL1
Specificity:	Expected reactivity: Cow, Dog, Guinea Pig, Horse, Human, Mouse, Rabbit, Rat, Zebrafish Homology: Cow: 100%; Dog: 100%; Guinea Pig: 100%; Horse: 100%; Human: 100%; Mouse: 100%; Rabbit: 100%; Rat: 100%; Zebrafish: 92%
Formulation:	Liquid. Purified antibody supplied in 1x PBS buffer with 0.09% (w/v) sodium azide and 2% sucrose. <i>Note that this product is shipped as lyophilized powder to China customers.</i>
Concentration:	lot specific
Purification:	Protein A purified
Conjugation:	Unconjugated
Storage:	For short term use, store at 2-8°C up to 1 week. For long term storage, store at -20°C in small aliquots to prevent freeze-thaw cycles.
Stability:	Shelf life: one year from despatch.
Predicted Protein Size:	49kDa
Gene Name:	MYB proto-oncogene like 1
Database Link:	XP_948618 Entrez Gene 4603 Human P10243
Background:	MYBL1 is strong transcriptional activator; DNA-binding protein that specifically recognize the sequence 5'-YAAC[GT]G-3'. It could have a role in the proliferation and/or differentiation of neurogenic, spermatogenic and B-lymphoid cells.
Synonyms:	A-MYB; AMYB; MGC120059; MGC120061

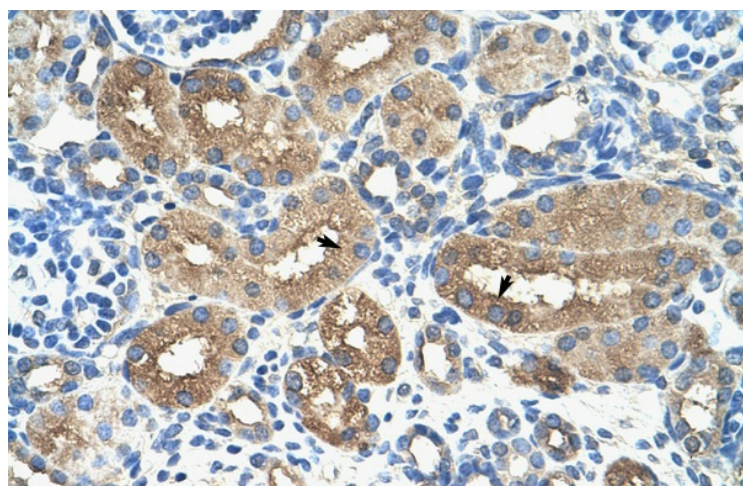


[View online »](#)

Product images:



WB Suggested Anti-MYBL1 Antibody Titration:
2.5ug/ml
Positive Control: Jurkat cell lysate



Human kidney