

Product datasheet for **TA355560**

RBM6 Rabbit Polyclonal Antibody

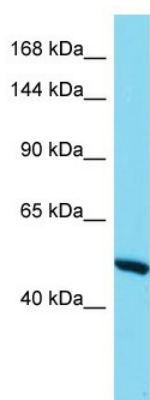
Product data:

Product Type:	Primary Antibodies
Applications:	WB
Reactivity:	Human
Host:	Rabbit
Clonality:	Polyclonal
Immunogen:	The immunogen is a synthetic peptide directed towards the C-terminal region of human RBM6
Specificity:	Expected reactivity: Cow, Dog, Guinea Pig, Horse, Human, Mouse, Rabbit, Rat Homology: Cow: 100%; Dog: 93%; Guinea Pig: 100%; Horse: 93%; Human: 100%; Mouse: 100%; Rabbit: 86%; Rat: 100%
Formulation:	Liquid. Purified antibody supplied in 1x PBS buffer with 0.09% (w/v) sodium azide and 2% sucrose.
Concentration:	lot specific
Purification:	Affinity Purified
Conjugation:	Unconjugated
Storage:	For short term use, store at 2-8°C up to 1 week. For long term storage, store at -20°C in small aliquots to prevent freeze-thaw cycles.
Stability:	Shelf life: one year from despatch.
Predicted Protein Size:	57kDa
Gene Name:	RNA binding motif protein 6
Database Link:	NP_001161054.1 Entrez Gene 10180 Human B4E0G6
Synonyms:	3G2; DEF-3; DEF3; DKFZp686B0877; FLJ36517; FLJ39446; FLJ42036; g16; HLC-11; NY-LU-12



[View online »](#)

Product images:



Host: Rabbit
Target Name: RBM6
Sample Type: Thyroid Tumor lysates
Antibody Dilution: 1.0ug/ml