

Product datasheet for **TA355557**

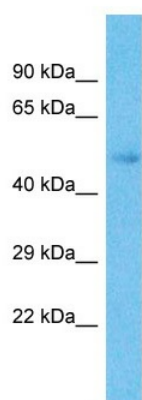
ZFP57 Rabbit Polyclonal Antibody

Product data:

Product Type:	Primary Antibodies
Applications:	WB
Reactivity:	Human
Host:	Rabbit
Clonality:	Polyclonal
Immunogen:	The immunogen is a synthetic peptide directed towards the N-terminal region of Human ZFP57
Specificity:	Expected reactivity: Human, Rabbit Homology: Human: 100%; Rabbit: 86%
Formulation:	Liquid. Purified antibody supplied in 1x PBS buffer with 0.09% (w/v) sodium azide and 2% sucrose. <i>Note that this product is shipped as lyophilized powder to China customers.</i>
Concentration:	lot specific
Purification:	Affinity Purified
Conjugation:	Unconjugated
Storage:	For short term use, store at 2-8°C up to 1 week. For long term storage, store at -20°C in small aliquots to prevent freeze-thaw cycles.
Stability:	Shelf life: one year from despatch.
Predicted Protein Size:	49kDa
Gene Name:	ZFP57 zinc finger protein
Database Link:	Entrez Gene 346171 Human Q9NU63
Background:	The protein encoded by this gene is a zinc finger protein containing a KRAB domain. Studies in mouse suggest that this protein may function as a transcriptional repressor. Mutations in this gene have been associated with transient neonatal diabetes mellitus type 1 (TNDM1).
Synonyms:	bA145L22; bA145L22.2; C6orf40; TNDM1; Zfp-57; ZNF698



[View online »](#)

Product images:

Host: Rabbit
Target Name: ZFP57
Sample Type: Lymph Node Tumor lysates
Antibody Dilution: 1.0ug/ml