

Product datasheet for **TA355555**

AIRE Rabbit Polyclonal Antibody

Product data:

Product Type:	Primary Antibodies
Applications:	IHC, WB
Reactivity:	Human, Mouse
Host:	Rabbit
Clonality:	Polyclonal
Immunogen:	The immunogen is a synthetic peptide directed towards the N terminal region of human AIRE
Specificity:	Expected reactivity: Cow, Dog, Guinea Pig, Horse, Human, Mouse, Rat Homology: Cow: 92%; Dog: 100%; Guinea Pig: 100%; Horse: 100%; Human: 100%; Mouse: 100%; Rat: 100%
Formulation:	Liquid. Purified antibody supplied in 1x PBS buffer with 0.09% (w/v) sodium azide and 2% sucrose.
Concentration:	lot specific
Purification:	Affinity Purified
Conjugation:	Unconjugated
Storage:	For short term use, store at 2-8°C up to 1 week. For long term storage, store at -20°C in small aliquots to prevent freeze-thaw cycles.
Stability:	Shelf life: one year from despatch.
Predicted Protein Size:	58kDa
Gene Name:	autoimmune regulator
Database Link:	NP_000374 Entrez Gene 11634 Mouse Entrez Gene 326 Human O43918



[View online »](#)

Background:

The function of the protein encoded by the AIRE gene is not well defined. However it contains zinc finger motifs suggestive of a transcription factor. The protein (isoform 1) is localized to both the nucleus and cytoplasm. Defects in this gene cause the autosomal-recessive systemic autoimmune disease termed autoimmune polyendocrinopathy-candidiasis-ectodermal dystrophy (APECED). This gene encodes a transcriptional regulator that forms nuclear bodies and interacts with the transcriptional coactivator CBP. At least three splice variant mRNAs products have been described including one which results in a premature stop codon and a transcript predicted to be a candidate for nuclear-mediated decay (NMD). Defects in this gene cause the rare autosomal-recessive systemic autoimmune disease termed autoimmune polyendocrinopathy-candidiasis-ectodermal dystrophy (APECED).

Synonyms:

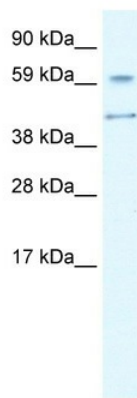
AIRE1; APECED; APS1; APSI; OTTHUMP00000109529; PGA1

Protein Families:

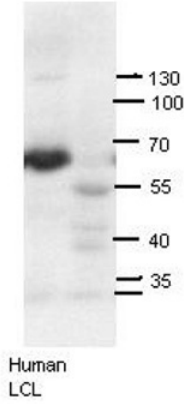
Druggable Genome

Protein Pathways:

Primary immunodeficiency, Ubiquitin mediated proteolysis

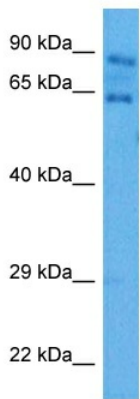
Product images:

WB Suggested Anti-AIRE Antibody Titration: 0.2-1 ug/ml
ELISA Titer: 1:1562500
Positive Control: Human Liver



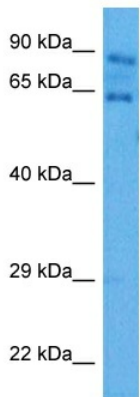
Western Blot
Lane 1: Human LCL
1:1000 dilution with 5% milk

AIRE antibody - N-terminal region (TA355555) validated by WB using human LCL at 1:1000.



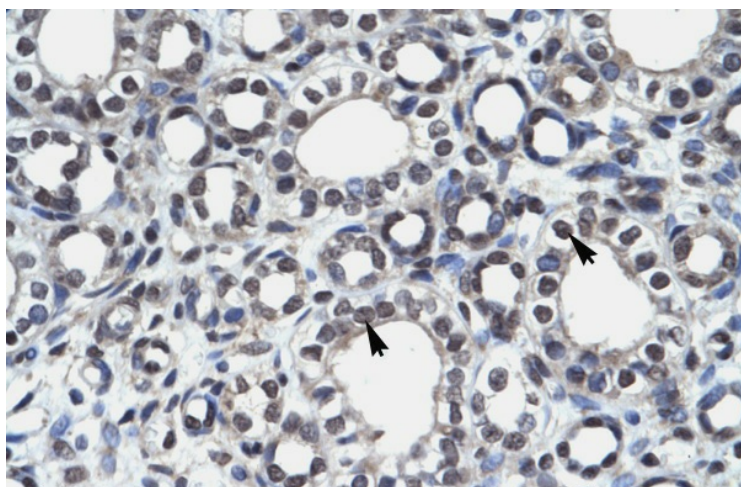
Host: Rabbit
Target Name: Aire
Sample Type: Mouse Skeletal Muscle Lysate
Antibody Dilution: 1.0µg/ml

Host: Rabbit
Target Name: AIRE
Sample Tissue: Mouse Skeletal Muscle
Antibody Dilution: 1ug/ml



Host: Rabbit
Target Name: Aire
Sample Type: Mouse Skeletal Muscle Lysate
Antibody Dilution: 1.0µg/ml

Host: Mouse
Target Name: AIRE
Sample Tissue: Mouse Skeletal Muscle
Antibody Dilution: 1ug/ml



Rabbit Anti-AIRE Antibody
Catalog Number: ARP32650
Paraffin Embedded Tissue: Human Kidney
Cellular Data: Epithelial cells of renal tubule
Antibody Concentration: 4.0-8.0 ug/ml
Magnification: 400X