

## Product datasheet for **TA355548**

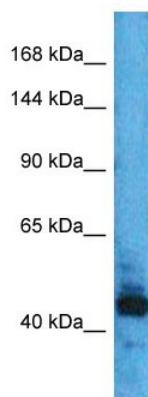
### BAZ2B Rabbit Polyclonal Antibody

#### Product data:

|                         |   |
|-------------------------|---|
| Product Type:           | Primary Antibodies  |
| Applications:           | WB  |
| Reactivity:             | Human   |
| Host:                   | Rabbit  |
| Clonality:              | Polyclonal  |
| Immunogen:              | The immunogen is a synthetic peptide directed towards the middle region of human BAZ2B  |
| Specificity:            | <b>Expected reactivity:</b> Cow, Dog, Guinea Pig, Horse, Human, Mouse, Pig, Rabbit, Rat<br><b>Homology:</b> Cow: 93%; Dog: 93%; Guinea Pig: 79%; Horse: 86%; Human: 100%; Mouse: 79%; Pig: 86%; Rabbit: 93%; Rat: 86% |
| Formulation:            | Liquid. Purified antibody supplied in 1x PBS buffer with 0.09% (w/v) sodium azide and 2% sucrose.<br><i>Note that this product is shipped as lyophilized powder to China customers.</i>                               |
| Concentration:          | lot specific  |
| Purification:           | Affinity Purified   |
| Conjugation:            | Unconjugated  |
| Storage:                | For short term use, store at 2-8°C up to 1 week. For long term storage, store at -20°C in small aliquots to prevent freeze-thaw cycles.   |
| Stability:              | Shelf life: one year from despatch.   |
| Predicted Protein Size: | 48kDa   |
| Gene Name:              | bromodomain adjacent to zinc finger domain 2B   |
| Database Link:          | <a href="#">NP_001276904.1</a><br><a href="#">Entrez Gene 29994 Human</a><br><a href="#">Q9UIF8</a>   |
| Synonyms:               | DKFZp434H071; DKFZp762I0516; FLJ45644; hWALp4; KIAA1476; WALp4  |
| Protein Families:       | Druggable Genome  |



[View online »](#)

**Product images:**

Host: Rabbit  
Target Name: DKFZp686H10114  
Sample Type: Thyroid tumor lysates  
Antibody Dilution: 1.0ug/ml