

Product datasheet for **TA355540**

GRIP1 Rabbit Polyclonal Antibody

Product data:

Product Type:	Primary Antibodies
Applications:	WB
Reactivity:	Human
Host:	Rabbit
Clonality:	Polyclonal
Immunogen:	The immunogen is a synthetic peptide directed towards the N terminal region of human GRIP1
Specificity:	Expected reactivity: Dog, Guinea Pig, Horse, Human, Mouse, Rabbit, Rat Homology: Dog: 100%; Guinea Pig: 100%; Horse: 100%; Human: 100%; Mouse: 100%; Rabbit: 100%; Rat: 100%
Formulation:	Liquid. Purified antibody supplied in 1x PBS buffer with 0.09% (w/v) sodium azide and 2% sucrose. <i>Note that this product is shipped as lyophilized powder to China customers.</i>
Concentration:	lot specific
Purification:	Protein A purified
Conjugation:	Unconjugated
Storage:	For short term use, store at 2-8°C up to 1 week. For long term storage, store at -20°C in small aliquots to prevent freeze-thaw cycles.
Stability:	Shelf life: one year from despatch.
Predicted Protein Size:	117kDa
Gene Name:	glutamate receptor interacting protein 1
Database Link:	XP_290559 Entrez Gene 23426 Human Q9Y3R0
Background:	GRIP1 is a steroid receptor coactivator family (SRC) member. SRC proteins comprise a well-characterized family of nuclear receptor (NR) coactivators that increase transcriptional activation by NRs via covalent modification of chromatin proteins and recruitment of other coactivators.

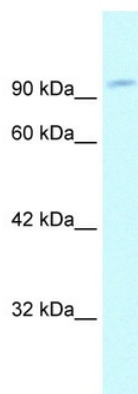


[View online »](#)

Synonyms: GRIP

Protein Families: Druggable Genome

Product images:



WB Suggested Anti-GRIP1 Antibody Titration:
1.25ug/ml
Positive Control: Human Muscle