

Product datasheet for **TA355531**

SIX homeobox 4 (SIX4) Rabbit Polyclonal Antibody

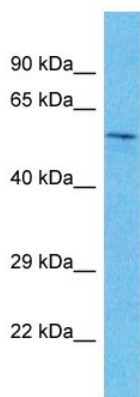
Product data:

Product Type:	Primary Antibodies
Applications:	WB
Reactivity:	Human
Host:	Rabbit
Clonality:	Polyclonal
Immunogen:	The immunogen is a synthetic peptide directed towards the middle region of human SIX4
Specificity:	Expected reactivity: Dog, Guinea Pig, Horse, Human, Mouse, Rat, Zebrafish Homology: Dog: 100%; Guinea Pig: 100%; Horse: 100%; Human: 100%; Mouse: 100%; Rat: 100%; Zebrafish: 93%
Formulation:	Liquid. Purified antibody supplied in 1x PBS buffer with 0.09% (w/v) sodium azide and 2% sucrose.
Concentration:	lot specific
Purification:	Affinity Purified
Conjugation:	Unconjugated
Storage:	For short term use, store at 2-8°C up to 1 week. For long term storage, store at -20°C in small aliquots to prevent freeze-thaw cycles.
Stability:	Shelf life: one year from despatch.
Predicted Protein Size:	57kDa
Gene Name:	SIX homeobox 4
Database Link:	NP_059116.3 Entrez Gene 51804 Human Q9UIU6
Background:	This gene encodes a member of the homeobox family, subfamily SIX. The drosophila homolog is a nuclear homeoprotein required for eye development. Studies in mouse show that this gene product functions as a transcription factor, and may have a role in the differentiation or maturation of neuronal cells.
Synonyms:	AREC3; MGC119450; MGC119452; MGC119453



[View online »](#)

Product images:



Host: Rabbit
Target Name: SIX4
Sample Type: Pancreas Tumor lysates
Antibody Dilution: 1.0ug/ml