

Product datasheet for **TA355530**

SIRT2 Rabbit Polyclonal Antibody

Product data:

Product Type:	Primary Antibodies
Applications:	WB
Reactivity:	Human, Mouse
Host:	Rabbit
Clonality:	Polyclonal
Immunogen:	The immunogen is a synthetic peptide directed towards the C terminal region of human SIRT2
Specificity:	Expected reactivity: Cow, Dog, Guinea Pig, Human, Mouse, Rabbit, Rat, Zebrafish Homology: Cow: 93%; Dog: 86%; Guinea Pig: 93%; Human: 100%; Mouse: 93%; Rabbit: 79%; Rat: 93%; Zebrafish: 75%
Formulation:	Liquid. Purified antibody supplied in 1x PBS buffer with 0.09% (w/v) sodium azide and 2% sucrose. <i>Note that this product is shipped as lyophilized powder to China customers.</i>
Concentration:	lot specific
Purification:	Affinity Purified
Conjugation:	Unconjugated
Storage:	For short term use, store at 2-8°C up to 1 week. For long term storage, store at -20°C in small aliquots to prevent freeze-thaw cycles.
Stability:	Shelf life: one year from despatch.
Predicted Protein Size:	40kDa
Gene Name:	sirtuin 2
Database Link:	NP_085096 Entrez Gene 64383 Mouse Entrez Gene 22933 Human Q8IXJ6



[View online »](#)

Background:

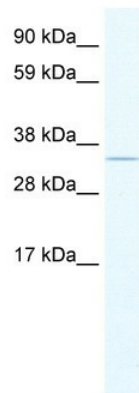
SIRT2 is a member of the sirtuin family of proteins, homologs to the yeast Sir2 protein. Members of the sirtuin family are characterized by a sirtuin core domain and grouped into four classes. The functions of human sirtuins have not yet been determined; however, yeast sirtuin proteins are known to regulate epigenetic gene silencing and suppress recombination of rDNA. Studies suggest that the human sirtuins may function as intracellular regulatory proteins with mono-ADP-ribosyltransferase activity. SIRT2 is included in class I of the sirtuin family. Two transcript variants result from alternative splicing of this gene.

Synonyms:

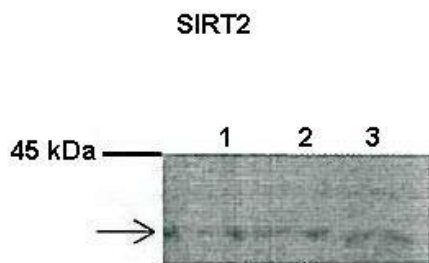
SIR2; SIR2-like; SIR2L; SIR2L2

Protein Families:

Druggable Genome, Transcription Factors

Product images:


WB Suggested Anti-SIRT2 Antibody Titration: 0.2-1 ug/ml
Positive Control: Human brain



Lanes:
1. 30 ug mouse pancreas extract 2. 30 ug mouse pancreas extract 3. 30 ug mouse pancreas extract
Primary Antibody Dilution: 1:1000
Secondary Antibody: Anti-rabbit HRP
Secondary Antibody Dilution: 1:2000
Gene Name: SIRT2
Submitted by: Dr. Jin Hee Lee, Ph.D., Winthrop-University Hospital

See Immunoblot 2 Data and Customer Feedback for more information