

Product datasheet for **TA355528**

SIRT2 Rabbit Polyclonal Antibody

Product data:

Product Type:	Primary Antibodies
Applications:	WB
Reactivity:	Human
Host:	Rabbit
Clonality:	Polyclonal
Immunogen:	The immunogen is a synthetic peptide directed towards the N terminal region of human SIRT2
Specificity:	Expected reactivity: Cow, Dog, Guinea Pig, Horse, Human, Mouse, Pig, Rabbit, Rat, Yeast Homology: Cow: 92%; Dog: 82%; Guinea Pig: 85%; Horse: 92%; Human: 100%; Mouse: 92%; Pig: 92%; Rabbit: 100%; Rat: 77%; Yeast: 79%
Formulation:	Liquid. Purified antibody supplied in 1x PBS buffer with 0.09% (w/v) sodium azide and 2% sucrose. <i>Note that this product is shipped as lyophilized powder to China customers.</i>
Concentration:	lot specific
Purification:	Affinity Purified
Conjugation:	Unconjugated
Storage:	For short term use, store at 2-8°C up to 1 week. For long term storage, store at -20°C in small aliquots to prevent freeze-thaw cycles.
Stability:	Shelf life: one year from despatch.
Predicted Protein Size:	43kDa
Gene Name:	sirtuin 2
Database Link:	NP_036369 Entrez Gene 22933 Human Q8IXJ6



[View online »](#)

Background:

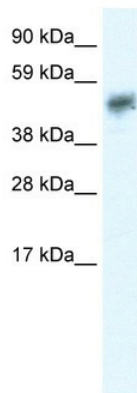
SIRT2 encodes a member of the sirtuin family of proteins, homologs to the yeast Sir2 protein. Members of the sirtuin family are characterized by a sirtuin core domain and grouped into four classes. The functions of human sirtuins have not yet been determined; however, yeast sirtuin proteins are known to regulate epigenetic gene silencing and suppress recombination of rDNA. Studies suggest that the human sirtuins may function as intracellular regulatory proteins with mono-ADP-ribosyltransferase activity. The protein encoded by SIRT2 is included in class I of the sirtuin family.

Synonyms:

SIR2; SIR2-like; SIR2L; SIR2L2

Protein Families:

Druggable Genome, Transcription Factors

Product images:

WB Suggested Anti-SIRT2 Antibody Titration: 0.2-1 ug/ml
ELISA Titer: 1:312500
Positive Control: Human brain