

Product datasheet for TA355526

Gps1 Rabbit Polyclonal Antibody

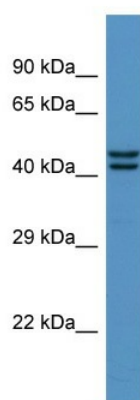
Product data:

Product Type:	Primary Antibodies
Applications:	WB
Reactivity:	Rat
Host:	Rabbit
Clonality:	Polyclonal
Immunogen:	The immunogen is a synthetic peptide directed towards the N-terminal region of RAT Gps1
Specificity:	Expected reactivity: Cow, Dog, Guinea Pig, Horse, Human, Mouse, Rat, Zebrafish Homology: Cow: 100%; Dog: 100%; Guinea Pig: 100%; Horse: 100%; Human: 100%; Mouse: 100%; Rat: 100%; Zebrafish: 100%
Formulation:	Liquid. Purified antibody supplied in 1x PBS buffer with 0.09% (w/v) sodium azide and 2% sucrose. <i>Note that this product is shipped as lyophilized powder to China customers.</i>
Concentration:	lot specific
Purification:	Affinity Purified
Conjugation:	Unconjugated
Storage:	For short term use, store at 2-8°C up to 1 week. For long term storage, store at -20°C in small aliquots to prevent freeze-thaw cycles.
Stability:	Shelf life: one year from despatch.
Predicted Protein Size:	51kDa
Gene Name:	G protein pathway suppressor 1
Database Link:	Entrez Gene 117039 Rat P97834
Background:	Gps1 is a human homolg suppresses G-protein and mitogen-activated protein kinase mediated signal transduction.
Synonyms:	COPS1; Cops1; Csn1; MGC7191; R75577; Sgn1



[View online »](#)

Product images:



Host: Rabbit
Target Name: Gps1
Sample Type: Rat Brain lysates
Antibody Dilution: 1.0ug/ml