

## Product datasheet for **TA355523**

### GLI3 Rabbit Polyclonal Antibody

#### Product data:

Product Type:	Primary Antibodies
Applications:	IHC
Reactivity:	Human
Host:	Rabbit
Clonality:	Polyclonal
Immunogen:	The immunogen is a synthetic peptide directed towards the following sequence KPDEDLPSPGARGQQEQPEGTTLVKEEGDKDESKQEPEVIYETNCHWEGC
Specificity:	<b>Expected reactivity:</b> Cow, Dog, Guinea Pig, Horse, Human, Mouse, Rabbit, Rat, Zebrafish <b>Homology:</b> Cow: 100%; Dog: 93%; Guinea Pig: 100%; Horse: 100%; Human: 100%; Mouse: 100%; Rabbit: 100%; Rat: 100%; Zebrafish: 79%
Formulation:	Liquid. Purified antibody supplied in 1x PBS buffer with 0.09% (w/v) sodium azide and 2% sucrose.
Concentration:	lot specific
Purification:	Affinity Purified
Conjugation:	Unconjugated
Storage:	For short term use, store at 2-8°C up to 1 week. For long term storage, store at -20°C in small aliquots to prevent freeze-thaw cycles.
Stability:	Shelf life: one year from despatch.
Predicted Protein Size:	170 kDa
Gene Name:	GLI family zinc finger 3
Database Link:	<a href="#">NP_000159</a> <a href="#">Entrez Gene 2737 Human</a> <a href="#">P10071</a>



[View online »](#)

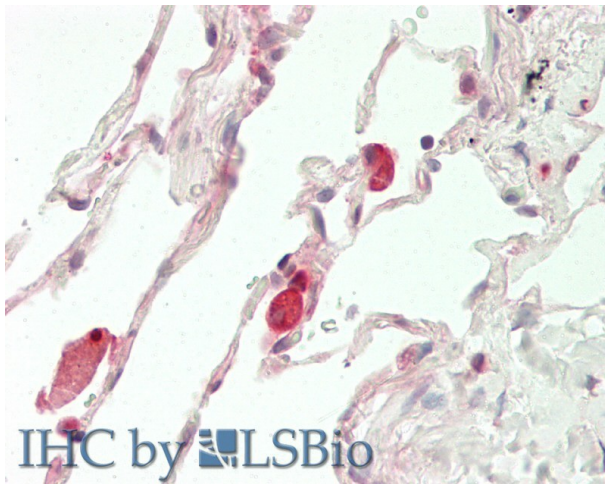
**Background:** This gene encodes a protein which belongs to the C2H2-type zinc finger proteins subclass of the Gli family. They are characterized as DNA-binding transcription factors and are mediators of Sonic hedgehog (Shh) signaling. The protein encoded by this gene localizes in the cytoplasm and activates patched Drosophila homolog (PTCH) gene expression. It is also thought to play a role during embryogenesis. Mutations in this gene have been associated with several diseases, including Greig cephalopolysyndactyly syndrome, Pallister-Hall syndrome, preaxial polydactyly type IV, and postaxial polydactyly types A1 and B.

**Synonyms:** ACLS; GCPS; OTTHUMP00000159085; PAP-A; PAPA; PAPA1; PAPB; PHS; PPDIV

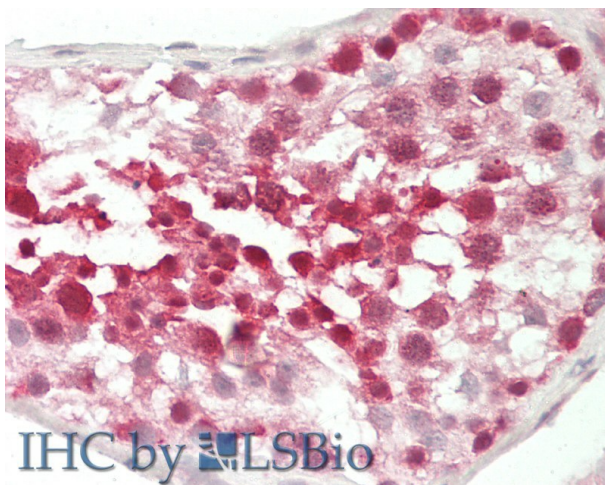
**Protein Families:** Adult stem cells, Cancer stem cells, Druggable Genome, Embryonic stem cells, ES Cell Differentiation/IPS

**Protein Pathways:** Basal cell carcinoma, Hedgehog signaling pathway, Pathways in cancer

### Product images:



Rabbit Anti-GLI3 antibody  
Catalog Number: ARP32317  
Formalin Fixed Paraffin Embedded Tissue:  
Human Lung  
Primary antibody Concentration: 1:100  
Secondary Antibody: Donkey anti-Rabbit-Cy3  
Secondary Antibody Concentration: 1:200  
Magnification: 20x  
Exposure Time: 0.5-2.0sec



Rabbit Anti-GLI3 antibody  
Catalog Number: ARP32317  
Formalin Fixed Paraffin Embedded Tissue:  
Human Testis  
Primary antibody Concentration: 1:100  
Secondary Antibody: Donkey anti-Rabbit-Cy3  
Secondary Antibody Concentration: 1:200  
Magnification: 20x  
Exposure Time: 0.5-2.0sec