

Product datasheet for **TA355522**

Hdac6 Rabbit Polyclonal Antibody

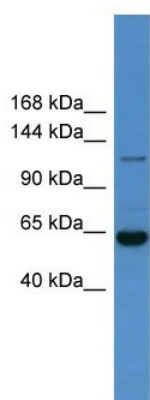
Product data:

Product Type:	Primary Antibodies
Applications:	IHC, WB
Reactivity:	Human, Mouse
Host:	Rabbit
Clonality:	Polyclonal
Immunogen:	The immunogen is a synthetic peptide corresponding to a region of Rat
Specificity:	Expected reactivity: Guinea Pig, Human, Mouse, Rat Homology: Guinea Pig: 93%; Human: 100%; Mouse: 86%; Rat: 86%
Formulation:	Liquid. Purified antibody supplied in 1x PBS buffer with 0.09% (w/v) sodium azide and 2% sucrose. <i>Note that this product is shipped as lyophilized powder to China customers.</i>
Concentration:	lot specific
Purification:	Affinity Purified
Conjugation:	Unconjugated
Storage:	For short term use, store at 2-8°C up to 1 week. For long term storage, store at -20°C in small aliquots to prevent freeze-thaw cycles.
Stability:	Shelf life: one year from despatch.
Predicted Protein Size:	125kDa
Gene Name:	histone deacetylase 6
Database Link:	XP_228753 Entrez Gene 10013 Human Entrez Gene 15185 Mouse Q9UBN7
Background:	The function of Hdac6 remains unknown.
Synonyms:	FLJ16239; HD6; JM21; KIAA0901; OTTHUMP00000197663

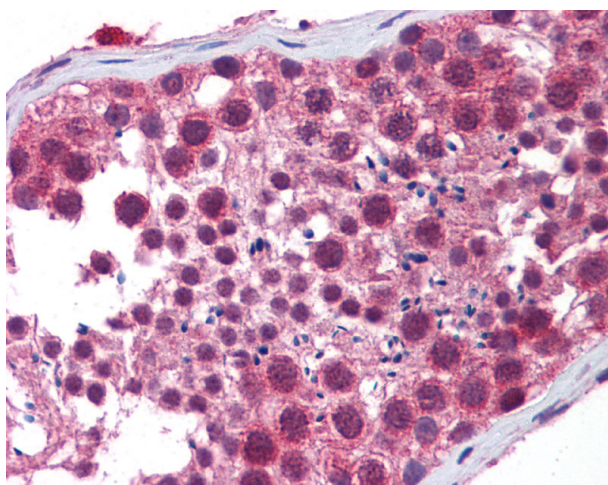


[View online »](#)

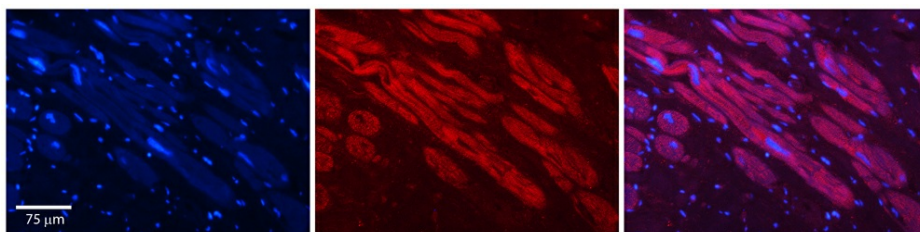
Product images:



WB Suggested Anti-Hdac6 Antibody Titration: 0.2-1 ug/ml
 ELISA Titer: 1:62500
 Positive Control: Mouse Liver



Testis



Rabbit Anti-Hdac6 Antibody
 Catalog Number: TA355522
 Formalin Fixed Paraffin Embedded Tissue:
 Human Adult heart
 Observed Staining: Cytoplasmic
 Primary Antibody Concentration: 1:100
 Secondary Antibody: Donkey anti-Rabbit-Cy2/3
 Secondary Antibody Concentration: 1:200
 Magnification: 20X
 Exposure Time: 0.5–2.0 sec
 Protocol located in Reviews and Data.