

Product datasheet for **TA355510**

Wnt2 Rabbit Polyclonal Antibody

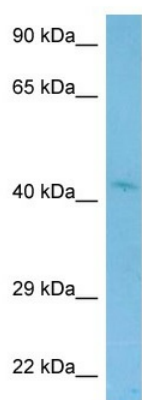
Product data:

Product Type:	Primary Antibodies
Applications:	WB
Reactivity:	Mouse
Host:	Rabbit
Clonality:	Polyclonal
Specificity:	Expected reactivity: Cow, Dog, Guinea Pig, Horse, Human, Mouse, Rabbit, Rat, Sheep, Zebrafish Homology: Cow: 100%; Dog: 100%; Guinea Pig: 100%; Horse: 100%; Human: 100%; Mouse: 100%; Rabbit: 100%; Rat: 100%; Sheep: 100%; Zebrafish: 92%
Formulation:	Liquid. Purified antibody supplied in 1x PBS buffer with 0.09% (w/v) sodium azide and 2% sucrose. <i>Note that this product is shipped as lyophilized powder to China customers.</i>
Concentration:	lot specific
Purification:	Affinity Purified
Conjugation:	Unconjugated
Storage:	For short term use, store at 2-8°C up to 1 week. For long term storage, store at -20°C in small aliquots to prevent freeze-thaw cycles.
Stability:	Shelf life: one year from despatch.
Predicted Protein Size:	40kDa
Gene Name:	wingless-type MMTV integration site family, member 2
Database Link:	NP_076142 Entrez Gene 22413 Mouse P21552
Background:	Wnt2 is a ligand for members of the frizzled family of seven transmembrane receptors. Wnt2 is a probable developmental protein. Wnt2 may be a signaling molecule which affects the development of discrete regions of tissues. Wnt2 is likely to signal over only few cell diameters.
Synonyms:	INT1L1; IRP



[View online »](#)

Product images:



Host: Rabbit
Target Name: Wnt2
Antibody Dilution: 1.0ug/ml
Sample Type: Mouse Stomach