

Product datasheet for **TA355507**

Axin 2 (AXIN2) Rabbit Polyclonal Antibody

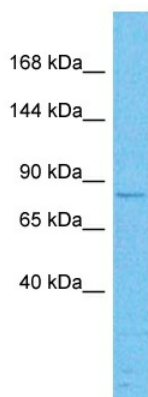
Product data:

Product Type:	Primary Antibodies
Applications:	WB
Reactivity:	Human
Host:	Rabbit
Clonality:	Polyclonal
Immunogen:	The immunogen is a synthetic peptide directed towards the C-terminal region of Human AXIN2
Specificity:	Expected reactivity: Cow, Dog, Guinea Pig, Horse, Human, Mouse, Rabbit, Rat Homology: Cow: 100%; Dog: 93%; Guinea Pig: 100%; Horse: 93%; Human: 100%; Mouse: 79%; Rabbit: 100%; Rat: 100%
Formulation:	Liquid. Purified antibody supplied in 1x PBS buffer with 0.09% (w/v) sodium azide and 2% sucrose. <i>Note that this product is shipped as lyophilized powder to China customers.</i>
Concentration:	lot specific
Purification:	Affinity purified
Conjugation:	Unconjugated
Storage:	For short term use, store at 2-8°C up to 1 week. For long term storage, store at -20°C in small aliquots to prevent freeze-thaw cycles.
Stability:	Shelf life: one year from despatch.
Predicted Protein Size:	92kDa
Gene Name:	axin 2
Database Link:	NP_004646 Entrez Gene 8313 Human Q9Y2T1
Background:	AXIN2 is a inhibitor of the Wnt signaling pathway. Down-regulates beta-catenin. It probably facilitate the phosphorylation of beta- catenin and APC by GSK3B (By similarity).
Synonyms:	AXIL; Conductin; DKFZp781B0869; MGC10366; MGC126582



[View online »](#)

Product images:



Host: Rabbit
Target Name: AXIN2
Sample Tissue: 293T Cell Lysate
Antibody Dilution: 1.0 μ g/ml

Host: Rabbit
Target Name: AXIN2
Sample Type: 293T Whole Cell lysates
Antibody Dilution: 1.0ug/ml