

Product datasheet for **TA355506**

Ywhae Rabbit Polyclonal Antibody

Product data:

Product Type:	Primary Antibodies
Applications:	IHC, WB
Reactivity:	Human, Mouse
Host:	Rabbit
Clonality:	Polyclonal
Specificity:	Expected reactivity: Cow, Guinea Pig, Horse, Human, Mouse, Rabbit, Rat, Sheep, Zebrafish Homology: Cow: 100%; Guinea Pig: 100%; Horse: 100%; Human: 100%; Mouse: 100%; Rabbit: 100%; Rat: 100%; Sheep: 100%; Zebrafish: 100%
Formulation:	Liquid. Purified antibody supplied in 1x PBS buffer with 0.09% (w/v) sodium azide and 2% sucrose. <i>Note that this product is shipped as lyophilized powder to China customers.</i>
Concentration:	lot specific
Purification:	Affinity Purified
Conjugation:	Unconjugated
Storage:	For short term use, store at 2-8°C up to 1 week. For long term storage, store at -20°C in small aliquots to prevent freeze-thaw cycles.
Stability:	Shelf life: one year from despatch.
Predicted Protein Size:	29kDa
Gene Name:	tyrosine 3-monooxygenase/tryptophan 5-monooxygenase activation protein, epsilon polypeptide
Database Link:	NP_033562 Entrez Gene 7531 HumanEntrez Gene 22627 Mouse P62259
Background:	YWHAE is an adapter protein implicated in the regulation of a large spectrum of both general and specialized signaling pathway. YWHAE binds to a large number of partners, usually by recognition of a phosphoserine or phosphothreonine motif. The binding generally results in the modulation of the activity of the binding partner.
Synonyms:	14-3-3E; FLJ45465; KCIP-1; MDCR; MDS

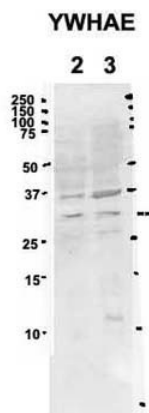


[View online »](#)

Product images:



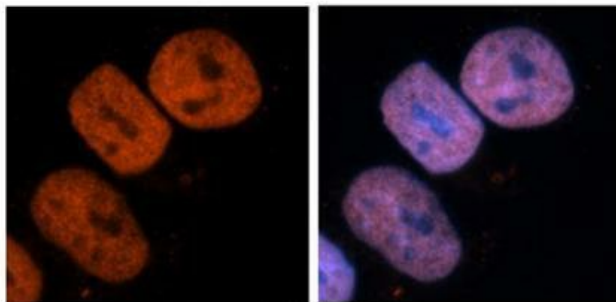
Ywhae antibody - C-terminal region (TA355506) validated by WB using Mouse Kidney lysate at 1.0ug/ml.



Sample Type: 2. mouse brain extracts (80ug)
3. rat brain extract (80ug)
Primary Antibody Dilution: 2ug/ml
Secondary Antibody: IRDye 800CW goat anti-rabbit from Li-COR Bioscience
Secondary Antibody Dilution: 1: 20,000
Image Submitted by: Yuzhi Chen
University of Arkansas for Medical Science

See Immunoblot 2 Data for more information.

YWHAE



Antibody--RED
DAPI--Blue

See IHC 1 Data and Customer Feedback for more information

Sample Type:

Human brain stem cells

Primary Antibody Dilution:

1:500

Secondary Antibody:

Goat anti-rabbit Alexa-Fluor 594

Secondary Antibody Dilution:

1:1000

Color/Signal Descriptions:

Ywhae: Red DAPI:Blue

Gene Name:

Ywhae

Submitted by:

Dr. Yuzhi Chen, University of Arkansas for Medical
Science