

## Product datasheet for **TA355501**

### Pdx1 Rabbit Polyclonal Antibody

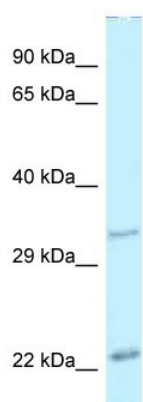
#### Product data:

Product Type:	Primary Antibodies
Applications:	WB
Reactivity:	Mouse
Host:	Rabbit
Clonality:	Polyclonal
Specificity:	<b>Expected reactivity:</b> Cow, Dog, Guinea Pig, Horse, Human, Mouse, Pig, Rabbit, Rat <b>Homology:</b> Cow: 100%; Dog: 100%; Guinea Pig: 91%; Horse: 100%; Human: 100%; Mouse: 100%; Pig: 92%; Rabbit: 100%; Rat: 100%
Formulation:	Liquid. Purified antibody supplied in 1x PBS buffer with 0.09% (w/v) sodium azide and 2% sucrose. <i>Note that this product is shipped as lyophilized powder to China customers.</i>
Concentration:	lot specific
Purification:	Affinity Purified
Conjugation:	Unconjugated
Storage:	For short term use, store at 2-8°C up to 1 week. For long term storage, store at -20°C in small aliquots to prevent freeze-thaw cycles.
Stability:	Shelf life: one year from despatch.
Predicted Protein Size:	31kDa
Gene Name:	pancreatic and duodenal homeobox 1
Database Link:	<a href="#">NP_032840</a> <a href="#">Entrez Gene 18609 Mouse P52946</a>
Background:	Pdx1 activates insulin and somatostatin gene transcription. It is a key regulator of islet peptide hormone expression but also responsible for the development of the pancreas, most probably by determining maturation and differentiation of common pancreatic precursor cells in the developing gut. It binds the DNA sequence 5'-CC[CT]TAATGGG-3'.
Synonyms:	GSF; IDX-1; IPF-1; IPF1; IUF-1; IUF1; MODY4; PDX-1; STF-1



[View online »](#)

## Product images:



WB Suggested Anti-Pdx1 Antibody  
Titration: 1.0 ug/ml  
Positive Control: Mouse Pancreas