

Product datasheet for **TA355499**

AIRE Rabbit Polyclonal Antibody

Product data:

Product Type:	Primary Antibodies
Applications:	WB
Reactivity:	Human
Host:	Rabbit
Clonality:	Polyclonal
Immunogen:	The immunogen is a synthetic peptide directed towards the middle region of human AIRE
Specificity:	Expected reactivity: Dog, Guinea Pig, Horse, Human, Rat Homology: Dog: 77%; Guinea Pig: 86%; Horse: 86%; Human: 100%; Rat: 86%
Formulation:	Liquid. Purified antibody supplied in 1x PBS buffer with 0.09% (w/v) sodium azide and 2% sucrose. <i>Note that this product is shipped as lyophilized powder to China customers.</i>
Concentration:	lot specific
Purification:	Affinity Purified
Conjugation:	Unconjugated
Storage:	For short term use, store at 2-8°C up to 1 week. For long term storage, store at -20°C in small aliquots to prevent freeze-thaw cycles.
Stability:	Shelf life: one year from despatch.
Predicted Protein Size:	58kDa
Gene Name:	autoimmune regulator
Database Link:	NP_000374 Entrez Gene 326 Human O43918



[View online »](#)

Background:

The function of the protein encoded by the AIRE gene is not well defined. However it contains zinc finger motifs suggestive of a transcription factor. The protein (isoform 1) is localized to both the nucleus and cytoplasm. Defects in this gene cause the autosomal-recessive systemic autoimmune disease termed autoimmune polyendocrinopathy-candidiasis-ectodermal dystrophy (APECED). This gene encodes a transcriptional regulator that forms nuclear bodies and interacts with the transcriptional coactivator CBP. At least three splice variant mRNAs products have been described including one which results in a premature stop codon and a transcript predicted to be a candidate for nuclear-mediated decay (NMD). Defects in this gene cause the rare autosomal-recessive systemic autoimmune disease termed autoimmune polyendocrinopathy-candidiasis-ectodermal dystrophy (APECED).

Synonyms:

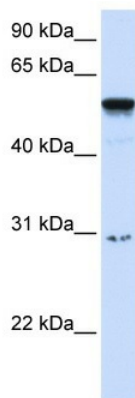
AIRE1; APECED; APS1; APSI; OTTHUMP00000109529; PGA1

Protein Families:

Druggable Genome

Protein Pathways:

Primary immunodeficiency, Ubiquitin mediated proteolysis

Product images:

WB Suggested Anti-AIRE Antibody Titration: 0.2-1 ug/ml
ELISA Titer: 1:62500
Positive Control: Human Placenta