

Product datasheet for **TA355477**

ASCL1 Rabbit Polyclonal Antibody

Product data:

Product Type:	Primary Antibodies
Applications:	WB
Reactivity:	Human, Mouse
Host:	Rabbit
Clonality:	Polyclonal
Immunogen:	The immunogen is a synthetic peptide directed towards the N-terminal region of Human ASCL1
Specificity:	Expected reactivity: Cow, Dog, Guinea Pig, Human, Mouse, Rabbit, Rat, Zebrafish Homology: Cow: 100%; Dog: 93%; Guinea Pig: 100%; Human: 100%; Mouse: 93%; Rabbit: 93%; Rat: 93%; Zebrafish: 85%
Formulation:	Liquid. Purified antibody supplied in 1x PBS buffer with 0.09% (w/v) sodium azide and 2% sucrose. <i>Note that this product is shipped as lyophilized powder to China customers.</i>
Concentration:	lot specific
Purification:	Affinity purified
Conjugation:	Unconjugated
Storage:	For short term use, store at 2-8°C up to 1 week. For long term storage, store at -20°C in small aliquots to prevent freeze-thaw cycles.
Stability:	Shelf life: one year from despatch.
Predicted Protein Size:	25kDa
Gene Name:	achaete-scute family bHLH transcription factor 1
Database Link:	NP_004307 Entrez Gene 429 Human P50553



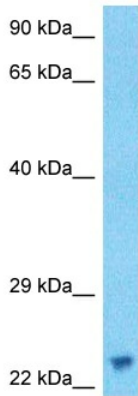
[View online »](#)

Background:

This gene encodes a member of the basic helix-loop-helix (BHLH) family of transcription factors. The protein activates transcription by binding to the E box (5'-CANNTG-3'). Dimerization with other BHLH proteins is required for efficient DNA binding. This protein plays a role in the neuronal commitment and differentiation and in the generation of olfactory and autonomic neurons. Mutations in this gene may contribute to the congenital central hypoventilation syndrome (CCHS) phenotype in rare cases.

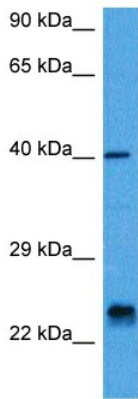
Synonyms:

ASH1; bHLHa46; HASH1; MASH1

Product images:


Host: Rabbit
 Target Name: ASCL1
 Sample Tissue: RPMI-8226 Cell Lysate
 Antibody Dilution: 1.0µg/ml

Host: Rabbit
 Target Name: ASCL1
 Sample Type: RPMI-8226 Whole Cell lysates
 Antibody Dilution: 1.0ug/ml



Host: Rabbit
 Target Name: Ascl1
 Sample Type: Mouse Pancreas Lysate
 Antibody Dilution: 1.0µg/ml

Host: Mouse
 Target Name: ASCL1
 Sample Tissue: Mouse Pancreas
 Antibody Dilution: 1ug/ml