

Product datasheet for **TA355469**

Nuclear Factor Erythroid 2 Related Factor 1 (NFE2L1) Rabbit Polyclonal Antibody

Product data:

Product Type:	Primary Antibodies
Applications:	WB
Reactivity:	Human
Host:	Rabbit
Clonality:	Polyclonal
Specificity:	Expected reactivity: Cow, Dog, Human, Mouse, Rabbit, Rat Homology: Cow: 100%; Dog: 100%; Human: 100%; Mouse: 100%; Rabbit: 100%; Rat: 100%
Formulation:	Liquid. Purified antibody supplied in 1x PBS buffer with 0.09% (w/v) sodium azide and 2% sucrose. <i>Note that this product is shipped as lyophilized powder to China customers.</i>
Concentration:	lot specific
Purification:	Affinity Purified
Conjugation:	Unconjugated
Storage:	For short term use, store at 2-8°C up to 1 week. For long term storage, store at -20°C in small aliquots to prevent freeze-thaw cycles.
Stability:	Shelf life: one year from despatch.
Predicted Protein Size:	85kDa
Gene Name:	nuclear factor, erythroid 2 like 1
Database Link:	NP_003195 Entrez Gene 4779 Human Q14494
Background:	NFE2L1 activates erythroid-specific, globin gene expression.
Synonyms:	FLJ00380; HBZ17; LCR-F1; NRF1; TCF11
Protein Families:	Transcription Factors

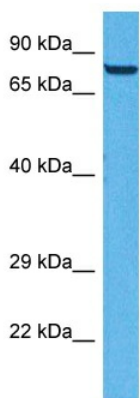


[View online »](#)

Product images:



WB Suggested Anti-NFE2L1 Antibody
 Titration: 1.0 ug/ml
 Positive Control: THP-1 Whole Cell



Host: Rabbit
 Target Name: NFE2L1
 Sample Type: HepG2 Cell Lysate
 Antibody Dilution: 1.0µg/ml

Host: Rabbit
 Target Name: NFE2L1
 Sample Tissue: Human HepG2 Whole Cell
 Antibody Dilution: 1ug/ml