

Product datasheet for TA355463

CMC4 Rabbit Polyclonal Antibody

Product data:

Product Type:	Primary Antibodies
Applications:	IHC, WB
Reactivity:	Human
Host:	Rabbit
Clonality:	Polyclonal
Specificity:	Expected reactivity: Cow, Dog, Guinea Pig, Horse, Human, Mouse, Rabbit, Rat Homology: Cow: 91%; Dog: 92%; Guinea Pig: 91%; Horse: 91%; Human: 100%; Mouse: 91%; Rabbit: 93%; Rat: 92%
Formulation:	Liquid. Purified antibody supplied in 1x PBS buffer with 0.09% (w/v) sodium azide and 2% sucrose.
Concentration:	lot specific
Purification:	Affinity Purified
Conjugation:	Unconjugated
Storage:	For short term use, store at 2-8°C up to 1 week. For long term storage, store at -20°C in small aliquots to prevent freeze-thaw cycles.
Stability:	Shelf life: one year from despatch.
Predicted Protein Size:	8kDa
Gene Name:	C-x(9)-C motif containing 4
Database Link:	NP_001018024 Entrez Gene 100272147 Human P56277
Background:	This gene was identified by involvement in some t(X;14) translocations associated with mature T-cell proliferations. This region has a complex gene structure, with a common promoter and 5' exon spliced to two different sets of 3' exons that encode two different proteins. This gene represents the downstream 8 kDa protein that localizes to mitochondria.
Synonyms:	C6.1B; MTCP1; MTCP1B; MTCP1NB; p8; p8MTCP1

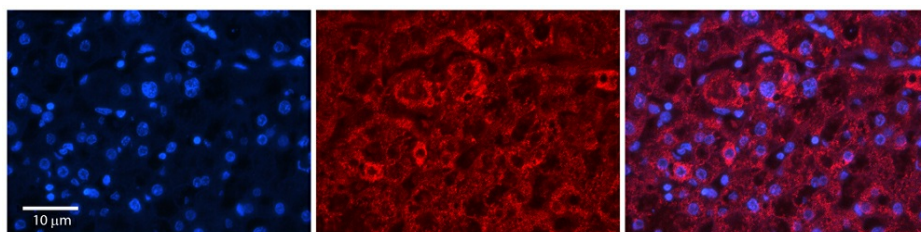


[View online »](#)

Product images:



WB Suggested Anti-MTCP1NB Antibody
 Titration: 1.0 ug/ml
 Positive Control: 293T Whole Cell
 CMC4 is strongly supported by BioGPS gene expression data to be expressed in Human HEK293T cells



Rabbit Anti-MTCP1NB Antibody
 Catalog Number: TA355463
 Formalin Fixed Paraffin Embedded Tissue:
 Human Adult Liver
 Observed Staining: Cytoplasm in hepatocytes, strong signal resembling mitochondria staining, wide tissue distribution
 Primary Antibody Concentration: 1:100
 Secondary Antibody: Donkey anti-Rabbit-Cy3
 Secondary Antibody Concentration: 1:200
 Magnification: 20X
 Exposure Time: 0.5–2.0 sec
 Protocol located in Reviews and Data.