

Product datasheet for **TA355460**

CGRP (CALCB) Rabbit Polyclonal Antibody

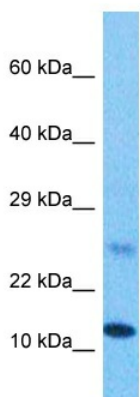
Product data:

Product Type:	Primary Antibodies
Applications:	WB
Reactivity:	Human
Host:	Rabbit
Clonality:	Polyclonal
Immunogen:	The immunogen is a synthetic peptide directed towards the middle region of human CALCB
Specificity:	Expected reactivity: Human Homology: Dog: 79%; Human: 100%; Pig: 79%; Rat: 80%
Formulation:	Liquid. Purified antibody supplied in 1x PBS buffer with 0.09% (w/v) sodium azide and 2% sucrose.
Concentration:	lot specific
Purification:	Affinity purified
Conjugation:	Unconjugated
Storage:	For short term use, store at 2-8°C up to 1 week. For long term storage, store at -20°C in small aliquots to prevent freeze-thaw cycles.
Stability:	Shelf life: one year from despatch.
Predicted Protein Size:	13 kDa
Gene Name:	calcitonin related polypeptide beta
Database Link:	NP_000719.1 Entrez Gene 797 Human P10092
Synonyms:	CALC2; CGRP-II; CGRP2; FLJ30166
Protein Families:	Druggable Genome, Secreted Protein



[View online »](#)

Product images:



Host: Rabbit
Target Name: CALCB
Sample Type: Stomach Tumor Lysate
Antibody Dilution: 1.0 μ g/ml

Host: Rabbit
Target Name: CALCB
Sample Tissue: Stomach Tumor lysates
Antibody Dilution: 1 μ g/ml