

Product datasheet for **TA355459**

Choline Acetyltransferase (CHAT) Rabbit Polyclonal Antibody

Product data:

Product Type:	Primary Antibodies
Applications:	WB
Reactivity:	Human
Host:	Rabbit
Clonality:	Polyclonal
Specificity:	Expected reactivity: Dog, Horse, Human, Pig Homology: Dog: 100%; Horse: 100%; Human: 100%; Pig: 91%
Formulation:	Liquid. Purified antibody supplied in 1x PBS buffer with 0.09% (w/v) sodium azide and 2% sucrose. <i>Note that this product is shipped as lyophilized powder to China customers.</i>
Concentration:	lot specific
Purification:	Affinity Purified
Conjugation:	Unconjugated
Storage:	For short term use, store at 2-8°C up to 1 week. For long term storage, store at -20°C in small aliquots to prevent freeze-thaw cycles.
Stability:	Shelf life: one year from despatch.
Predicted Protein Size:	70kDa
Gene Name:	choline O-acetyltransferase
Database Link:	NP_066264 Entrez Gene 1103 Human A2BDF5
Background:	CHAT is an enzyme which catalyzes the biosynthesis of the neurotransmitter acetylcholine. This protein is a characteristic feature of cholinergic neurons, and changes in these neurons may explain some of the symptoms of Alzheimer disease. Mutations in this gene are associated with congenital myasthenic syndrome associated with episodic apnea. Multiple transcript variants encoding different isoforms have been found for this gene, and some of these variants have been shown to encode more than one isoform.
Synonyms:	CHOACTase; CMS1A; CMS1A2

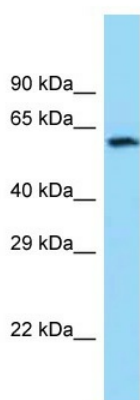


[View online »](#)

Protein Families: Druggable Genome

Protein Pathways: Glycerophospholipid metabolism

Product images:



WB Suggested Anti-CHAT Antibody
Titration: 1.0 ug/ml
Positive Control: Fetal Brain