

## Product datasheet for **TA355458**

### CHRNA6 Rabbit Polyclonal Antibody

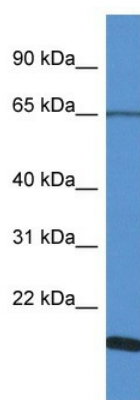
#### Product data:

Product Type:	Primary Antibodies
Applications:	WB
Reactivity:	Human
Host:	Rabbit
Clonality:	Polyclonal
Specificity:	<b>Expected reactivity:</b> Cow, Dog, Horse, Human, Mouse, Pig, Rabbit, Rat <b>Homology:</b> Cow: 86%; Dog: 93%; Horse: 86%; Human: 100%; Mouse: 75%; Pig: 92%; Rabbit: 79%; Rat: 75%
Formulation:	Liquid. Purified antibody supplied in 1x PBS buffer with 0.09% (w/v) sodium azide and 2% sucrose. <i>Note that this product is shipped as lyophilized powder to China customers.</i>
Concentration:	lot specific
Purification:	Affinity Purified
Conjugation:	Unconjugated
Storage:	For short term use, store at 2-8°C up to 1 week. For long term storage, store at -20°C in small aliquots to prevent freeze-thaw cycles.
Stability:	Shelf life: one year from despatch.
Predicted Protein Size:	57kDa
Gene Name:	cholinergic receptor nicotinic alpha 6 subunit
Database Link:	<a href="#">NP_004189</a> <a href="#">Entrez Gene 8973 Human</a> <a href="#">Q15825</a>
Background:	After binding acetylcholine, the AChR responds by an extensive change in conformation that affects all subunits and leads to opening of an ion-conducting channel across the plasma membrane.
Synonyms:	CHNRA6
Protein Families:	Druggable Genome, Ion Channels: Cys-loop Receptors, Transmembrane



[View online »](#)

## Product images:



WB Suggested Anti-CHRNA6 Antibody  
Titration: 1.0 ug/ml  
Positive Control: Jurkat Whole Cell