

Product datasheet for **TA355456**

Clk4 Rabbit Polyclonal Antibody

Product data:

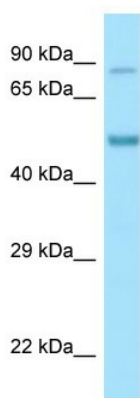
Product Type:	Primary Antibodies
Applications:	WB
Reactivity:	Mouse
Host:	Rabbit
Clonality:	Polyclonal
Specificity:	Expected reactivity: Cow, Dog, Guinea Pig, Horse, Human, Mouse, Rabbit, Rat Homology: Cow: 100%; Dog: 100%; Guinea Pig: 100%; Horse: 100%; Human: 100%; Mouse: 93%; Rabbit: 100%; Rat: 93%
Formulation:	Liquid. Purified antibody supplied in 1x PBS buffer with 0.09% (w/v) sodium azide and 2% sucrose. <i>Note that this product is shipped as lyophilized powder to China customers.</i>
Concentration:	lot specific
Purification:	Affinity Purified
Conjugation:	Unconjugated
Storage:	For short term use, store at 2-8°C up to 1 week. For long term storage, store at -20°C in small aliquots to prevent freeze-thaw cycles.
Stability:	Shelf life: one year from despatch.
Predicted Protein Size:	57kDa
Gene Name:	CDC like kinase 4
Database Link:	NP_031740 Entrez Gene 12750 Mouse O35493
Background:	Clk4 is a dual specificity kinase acting on both serine/threonine and tyrosine-containing substrates. Clk4 phosphorylates serine- and arginine-rich (SR) proteins of the spliceosomal complex and may be a constituent of a network of regulatory mechanisms that enable SR proteins to control RNA splicing. Clk4 phosphorylates SRSF1 and SRSF3. Clk4 is required for the regulation of alternative splicing of MAPT/TAU. Clk4 regulates the alternative splicing of tissue factor (F3) pre-mRNA in endothelial cells.



[View online »](#)

Synonyms: DKFZp686A20267

Product images:



Host: Rabbit
Target Name: Clk4
Antibody Dilution: 0.25ug/ml
Sample Type: Mouse Pancreas