

Product datasheet for **TA355455**

14-3-3 beta (YWHAB) Rabbit Polyclonal Antibody

Product data:

Product Type:	Primary Antibodies
Applications:	WB
Reactivity:	Human
Host:	Rabbit
Clonality:	Polyclonal
Immunogen:	The immunogen is a synthetic peptide directed towards the middle region of human YWHAB
Specificity:	Expected reactivity: Cow, Dog, Guinea Pig, Horse, Human, Mouse, Rabbit, Rat, Sheep Homology: Cow: 87%; Dog: 87%; Guinea Pig: 87%; Horse: 80%; Human: 87%; Mouse: 87%; Rabbit: 87%; Rat: 87%; Sheep: 87%
Formulation:	Liquid. Purified antibody supplied in 1x PBS buffer with 0.09% (w/v) sodium azide and 2% sucrose. <i>Note that this product is shipped as lyophilized powder to China customers.</i>
Concentration:	lot specific
Purification:	Affinity Purified
Conjugation:	Unconjugated
Storage:	For short term use, store at 2-8°C up to 1 week. For long term storage, store at -20°C in small aliquots to prevent freeze-thaw cycles.
Stability:	Shelf life: one year from despatch.
Predicted Protein Size:	28kDa
Gene Name:	tyrosine 3-monooxygenase/tryptophan 5-monooxygenase activation protein beta
Database Link:	NP_003395 Entrez Gene 7529 Human P31946
Background:	YWHAB belongs to the 14-3-3 family, members of which mediate signal transduction by binding to phosphoserine-containing proteins. YWHAB has been shown to interact with RAF1 and CDC25 phosphatases, suggesting that it may play a role in linking mitogenic signaling and the cell cycle machinery.
Synonyms:	GW128; HS1; KCIP-1

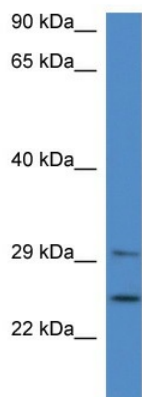


[View online »](#)

Protein Families: Druggable Genome

Protein Pathways: Cell cycle, Neurotrophin signaling pathway, Oocyte meiosis

Product images:



WB Suggested Anti-YWHAB Antibody
Titration: 1.0 ug/ml
Positive Control: Fetal Brain