

Product datasheet for **TA355452**

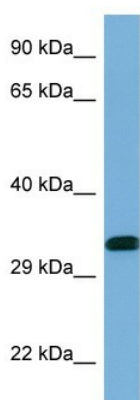
14-3-3 epsilon (YWHAE) Rabbit Polyclonal Antibody

Product data:

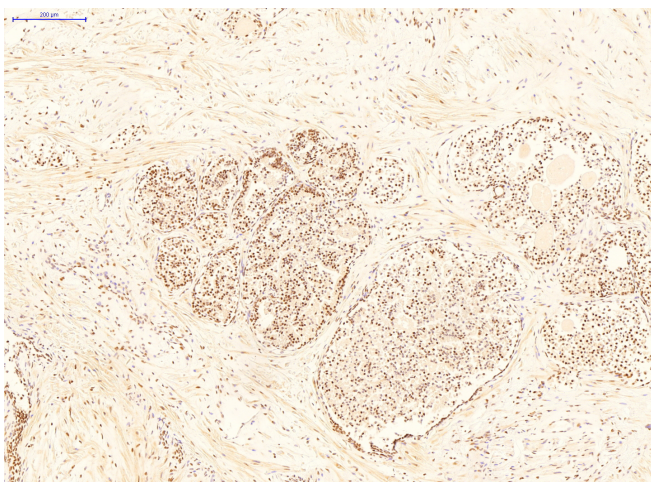
Product Type:	Primary Antibodies
Applications:	IHC, WB
Reactivity:	Human
Host:	Rabbit
Clonality:	Polyclonal
Specificity:	Expected reactivity: Cow, Guinea Pig, Horse, Human, Mouse, Rabbit, Rat, Sheep, Zebrafish Homology: Cow: 100%; Guinea Pig: 100%; Horse: 100%; Human: 100%; Mouse: 100%; Rabbit: 100%; Rat: 100%; Sheep: 100%; Zebrafish: 100%
Formulation:	Liquid. Purified antibody supplied in 1x PBS buffer with 0.09% (w/v) sodium azide and 2% sucrose. <i>Note that this product is shipped as lyophilized powder to China customers.</i>
Concentration:	lot specific
Purification:	Affinity Purified
Conjugation:	Unconjugated
Storage:	For short term use, store at 2-8°C up to 1 week. For long term storage, store at -20°C in small aliquots to prevent freeze-thaw cycles.
Stability:	Shelf life: one year from despatch.
Predicted Protein Size:	29kDa
Gene Name:	tyrosine 3-monooxygenase/tryptophan 5-monooxygenase activation protein epsilon
Database Link:	NP_006752 Entrez Gene 7531 Human P62258
Background:	YWHAE, tyrosine 3-monooxygenase/tryptophan 5-monooxygenase activation protein, epsilon polypeptide, MDS; MDCR; KCIP-1; 14-3-3E; FLJ45465; FLJ53559; YWHAE, 14-3-3 protein epsilon, 14-3-3 protein epsilon, 14-3-3 epsilon, protein kinase C inhibitor protein-1, mitoc.
Synonyms:	14-3-3E; FLJ45465; KCIP-1; MDCR; MDS
Protein Families:	Druggable Genome
Protein Pathways:	Cell cycle, Neurotrophin signaling pathway, Oocyte meiosis



[View online »](#)

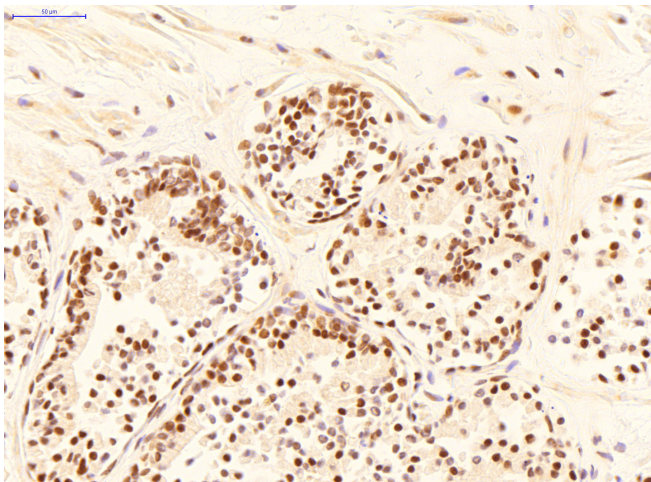
Product images:

WB Suggested Anti-YWHAE Antibody
Titration: 1.0 ug/ml
Positive Control: Placenta



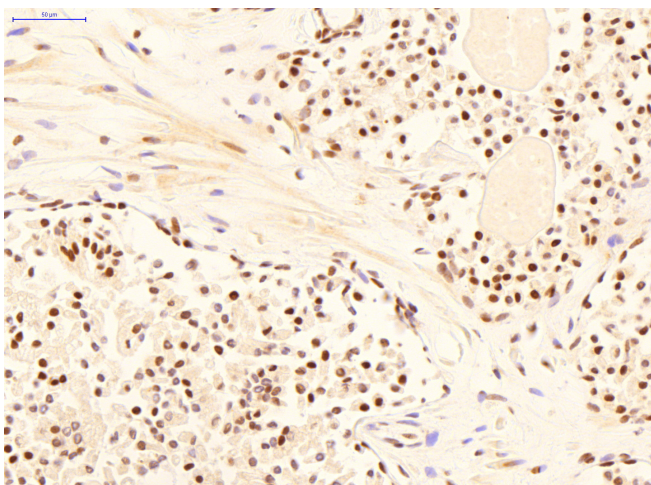
[Product Page for YWHAE antibody - C-terminal region \(TA355452\)](#)

Sample Type:
Normal Human Prostate
Primary Antibody Dilution:
1ug/mL
Color/Signal Descriptions:
YWHAE (DAB; brown), nuclei (hematoxylin; blue)
Gene Name:
YWHAE



[Product Page for YWHAE antibody - C-terminal region \(TA355452\)](#)

Sample Type:
Normal Human Prostate
Primary Antibody Dilution:
1ug/mL
Color/Signal Descriptions:
YWHAE (DAB; brown), nuclei (hematoxylin; blue)
Gene Name:
YWHAE



[Product Page for YWHAE antibody - C-terminal region \(TA355452\)](#)

Sample Type:
Normal Human Prostate
Primary Antibody Dilution:
1ug/mL
Color/Signal Descriptions:
YWHAE (DAB; brown), nuclei (hematoxylin; blue)
Gene Name:
YWHAE