

## Product datasheet for **TA355449**

### ID1 Rabbit Polyclonal Antibody

#### Product data:

Product Type:	Primary Antibodies
Applications:	IHC, WB
Reactivity:	Human
Host:	Rabbit
Clonality:	Polyclonal
Immunogen:	The immunogen is a synthetic peptide directed towards the middle region of Human ID1
Specificity:	<b>Expected reactivity:</b> Cow, Dog, Guinea Pig, Horse, Human, Mouse, Rabbit, Rat, Zebrafish <b>Homology:</b> Cow: 100%; Dog: 77%; Guinea Pig: 100%; Horse: 80%; Human: 100%; Mouse: 100%; Rabbit: 100%; Rat: 100%; Zebrafish: 87%
Formulation:	Liquid. Purified antibody supplied in 1x PBS buffer with 0.09% (w/v) sodium azide and 2% sucrose. <i>Note that this product is shipped as lyophilized powder to China customers.</i>
Concentration:	lot specific
Purification:	Affinity purified
Conjugation:	Unconjugated
Storage:	For short term use, store at 2-8°C up to 1 week. For long term storage, store at -20°C in small aliquots to prevent freeze-thaw cycles.
Stability:	Shelf life: one year from despatch.
Predicted Protein Size:	17kDa
Gene Name:	inhibitor of DNA binding 1, HLH protein
Database Link:	<a href="#">Entrez Gene 3397 Human P41134</a>
Background:	The protein encoded by this gene is a helix-loop-helix (HLH) protein that can form heterodimers with members of the basic HLH family of transcription factors. The encoded protein has no DNA binding activity and therefore can inhibit the DNA binding and transcriptional activation ability of basic HLH proteins with which it interacts. This protein may play a role in cell growth, senescence, and differentiation. Two transcript variants encoding different isoforms have been found for this gene.



[View online »](#)

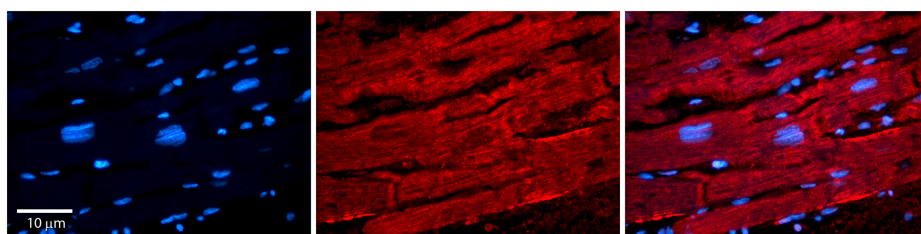
Synonyms: bHLHb24; dJ857M17.1.2; ID

### Product images:

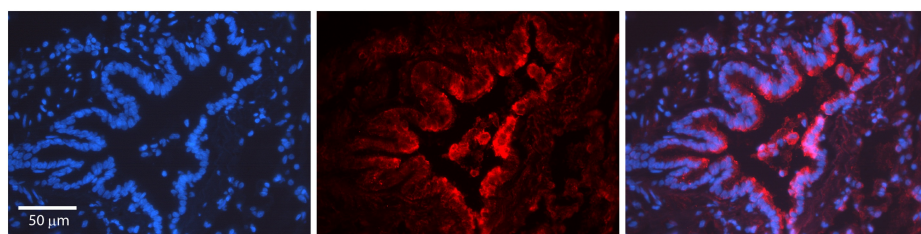


Host: Rabbit  
 Target Name: ID1  
 Sample Tissue: Hela Cell Lysate  
 Antibody Dilution: 1.0µg/ml

Host: Rabbit  
 Target Name: ID1  
 Sample Type: Hela Whole Cell lysates  
 Antibody Dilution: 1.0ug/ml



Rabbit Anti-ID1 Antibody  
 Catalog Number: TA355449  
 Formalin Fixed Paraffin Embedded Tissue:  
 Human heart Tissue  
 Observed Staining: Cytoplasmic  
 Primary Antibody Concentration: N/A  
 Other Working Concentrations: 1:600  
 Secondary Antibody: Donkey anti-Rabbit-Cy3  
 Secondary Antibody Concentration: 1:200  
 Magnification: 20X  
 Exposure Time: 0.5–2.0 sec



Rabbit Anti-ID1 Antibody  
 Catalog Number: TA355449  
 Formalin Fixed Paraffin Embedded Tissue:  
 Human Lung Tissue  
 Observed Staining: Cytoplasm  
 Primary Antibody Concentration: 1:100  
 Other Working Concentrations: N/A  
 Secondary Antibody: Donkey anti-Rabbit-Cy3  
 Secondary Antibody Concentration: 1:200  
 Magnification: 20X  
 Exposure Time: 0.5–2.0 sec